

Low-Profile-I.C. Socket

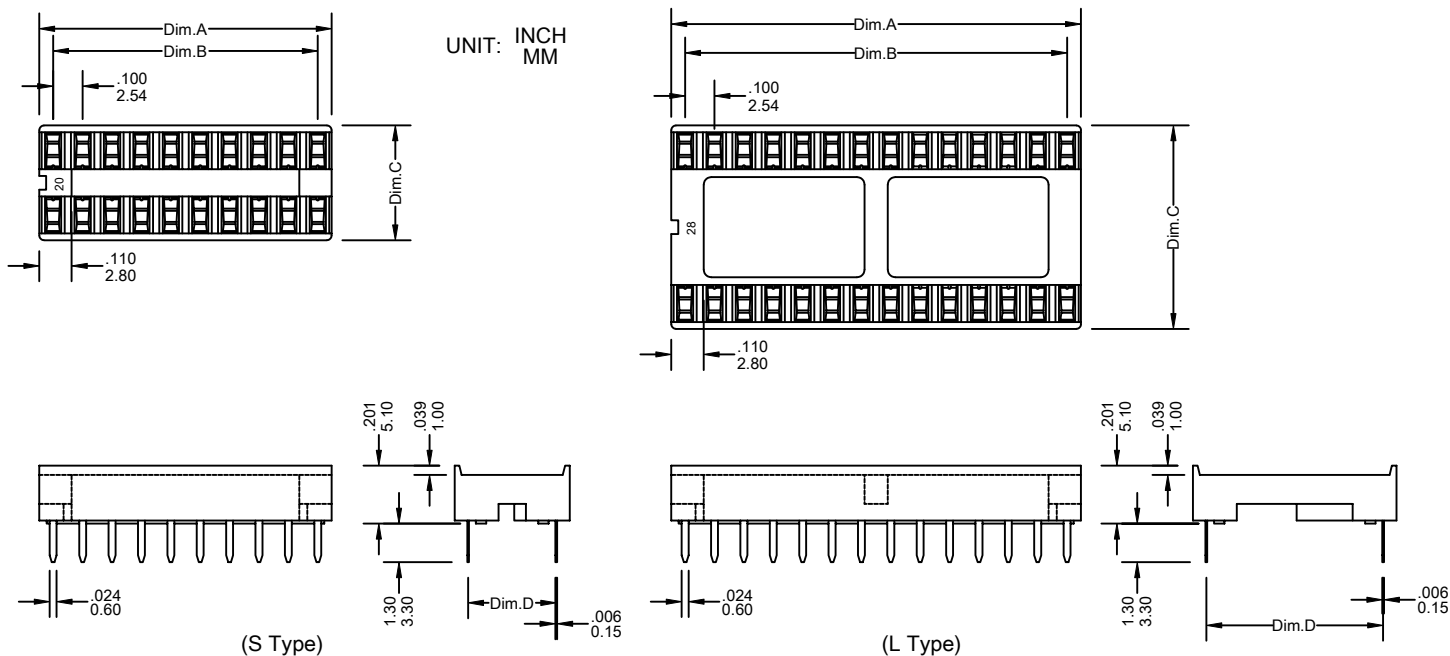
102 Series

SPECIFICATIONS:

- Current rating: 1A min.
- Contact resistance: Tin plate 20mΩ max.
Gold plate 10mΩ max.
- Insulation resistance: 5000M min. 500V DC
- Temperature range: -55°C ~ +85°C
- Withstand Voltage: AC 1000V [1 min.]
- Insertion Force: 140 Grams ±10
- Withdrawal Force: 75 Grams ±5

MATERIAL:

- Insulator: Glass-filled PBT [UL94V-0]
- Contact: Phosphor Bronze, Tin plated.
[Gold plated is available]



Ordering Information 102 Series

Series No.	S / L Type	No. of Contacts	Contact Plating	
102	- S	- 06P	T	- PB
102 Series	S: 06P 20P 08P 22P 14P 24P 16P 28P 18P 32P	L: 24P 48P 28P 32P 40P 42P	T: TIN	RoHs

Dimensional Information

S	Circuits	06	08	14	16	18	20	22	24	28	32	Dim.C±	.008 0.20	.394 10.00	
	Dim.A±	.008 0.20	.300 7.62	.400 10.16	.700 17.78	.800 20.32	.900 22.86	1.000 25.40	1.100 27.94	1.200 30.48	1.400 35.56	1.600 40.64	Dim.D±	.008 0.20	.300 7.62
	Dim.B±	.008 0.20	.200 5.08	.300 7.62	.600 15.24	.700 17.78	.800 20.32	.900 22.86	1.000 25.40	1.100 27.94	1.300 33.02	1.300 38.10			
L	Circuits	24	28	32	40	42	48					Dim.C±	.008 0.20	.697 17.70	
	Dim.A±	.008 0.20	1.200 30.48	1.400 35.56	1.600 40.64	2.000 50.80	2.100 53.34	2.400 60.96					Dim.D±	.008 0.20	.600 15.24
	Dim.B±	.008 0.20	1.100 27.94	1.300 33.02	1.500 38.10	1.900 48.26	2.000 50.80	2.300 58.42							