



# .156" (3.96mm) Center Crimp Terminal Housing

## 2410 Series

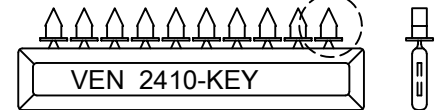
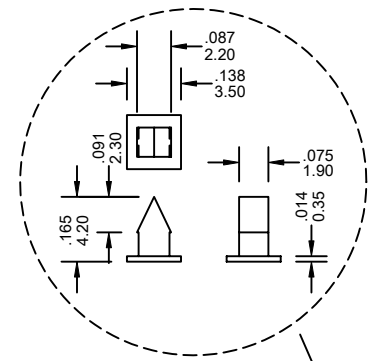
### FEATURES:

- . 2-25 Circuits
- . With or without locking ramp
- . Nylon, [UL 94V-2]
- . Mates with .045[1.14mm] square or round pins
- . Accepts double cantilever crimp terminal [2410-T or 2410-TA]
- . Housing available with integrally molded
- . Mates with .045[1.14mm] square or round pins polarizing key
- . Terminal retention to housing-8lbs. [3.63kg] Minimum

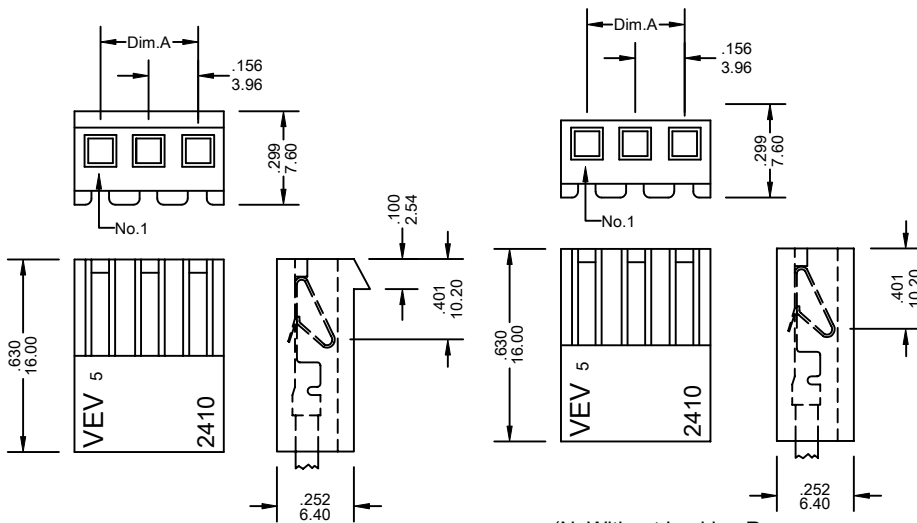
### SPECIFICATIONS:

- . Current rating: 7A AC, DC
- . Voltage rating: 250V AC, Maximum
- . Temperature range: -40°C ~ +105°C
- . Contact resistance: Initial Value/10mΩ max.  
After environmental testing /20mΩ max.
- . Insulation resistance: 5000 MΩ min
- . Withstand voltage: 1500V AC/minute
- . Applicable wires: AWG #22-#18

UNIT: INCH  
MM

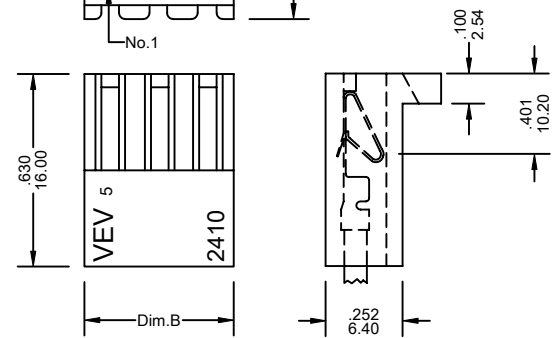
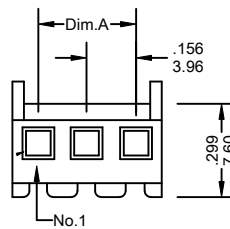


2410-K Polarizing Key



(Y: Locking Ramp Only)

(N: Without Locking Ramp and Polarizing Ribs)



(YA: With Locking Ramp or Polarizing Ribs)

### Ordering Information 2410 Series

Series No.	No. of Contacts	Polarizing Rib	Material	
2410	04P	Y	V0	A
2410 Series	02P ~ 25P	Y: With Locking Ramp Only YA: With Locking Ramp and Polarizing Ribs N: Without Locking Ramp and Ribs	V0: UL 94V-0, Nature V2: UL 94V-2, Nature	RoHs
2410-K One set: 10 pcs Polarizing Key				

### Dimensional Information

Circuits	Dim.A± .008 0.20	Dim.B± .008 0.20	Circuits	Dim.A± .008 0.20	Dim.B± .008 0.20	Circuits	Dim.A± .008 0.20	Dim.B± .008 0.20
2	.156 3.96	.330 8.39	3	.312 7.92	.486 12.35	4	.468 11.88	.642 16.31

2410 Series

\* FOR CIRCUIT SIZES 5 THROUGH 25 ADD .156" OR 3.96MM FOR EACH ADDITIONAL PIN.