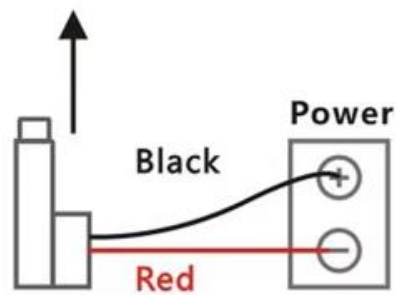
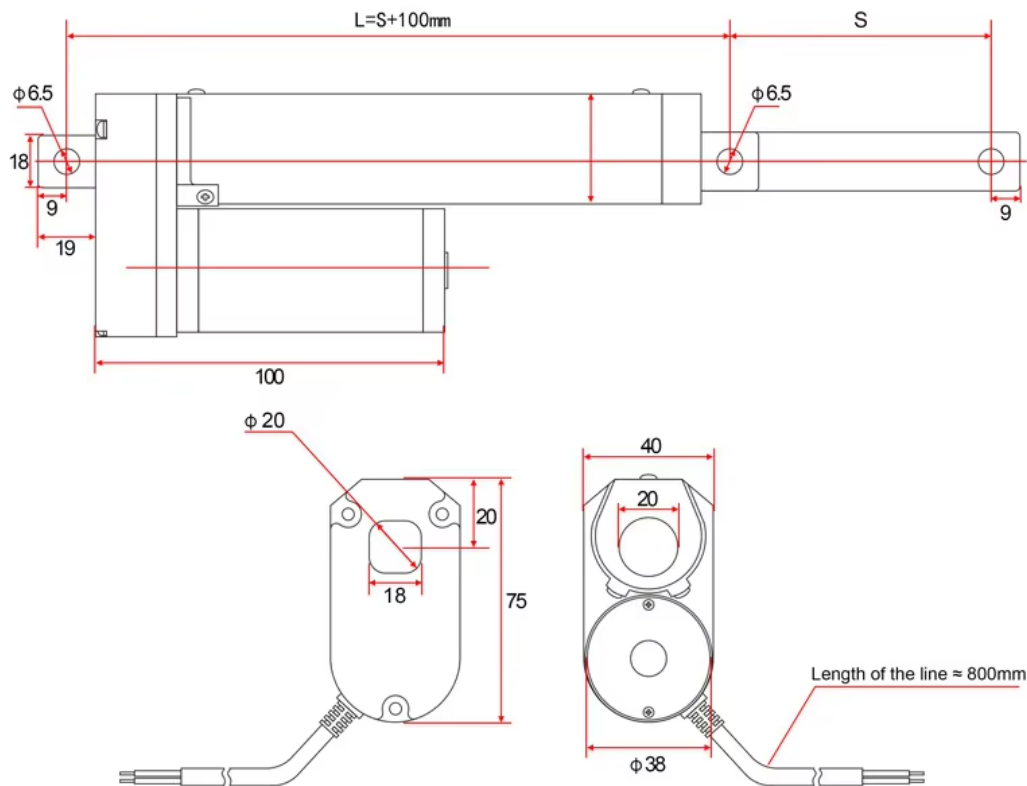
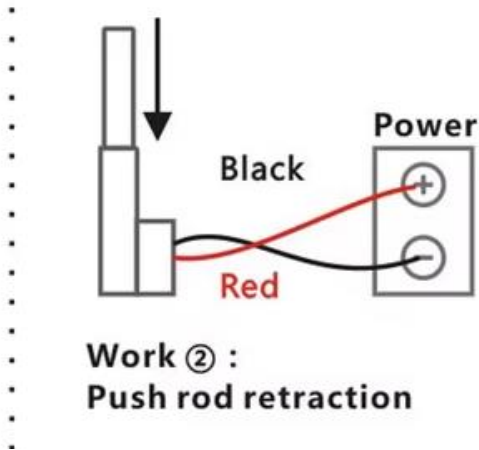


Size:



Work ① :
Push rod extension



Work ② :
Push rod retraction

Technical Parameters:

Rated power: 20W Maximum 30W

Stroke: 50mm/100mm/150mm/200mm/250mm/300mm/350mm/400mm/450mm/500mm

Permanent magnet DC motor drive;

Voltage: 12V,24V

Standard protection grade: IP54

Material: aluminum alloy

Ambient temperature -20°C to +75°C.

Low noise design, noise level less than 42dB.

Application: Television console.couch for massage.Electric bed.Medical chair.Electric equipment

The self-locking force of the linear actuator is about 80%