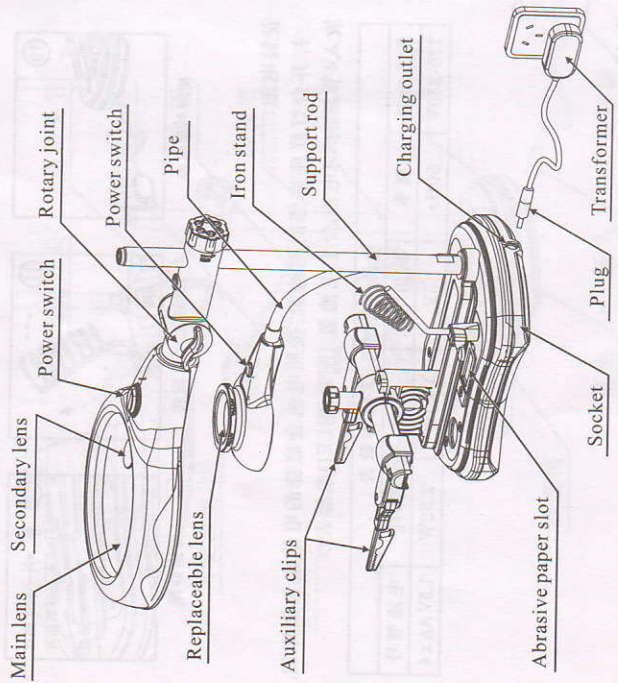


MG16130-108C

LED Auxiliary Clip Desk Lamp Magnifier

Main lens: Diameter 108mm	Magnification 2.5x	Focal length 200mm
Secondary lens: Diameter 21mm	Magnification 6x	Focal length 80mm
Replaceable lens: Diameter 30mm	Magnification 5x	Focal length 50mm
Diameter 30mm	Magnification 10x	Focal length 25mm

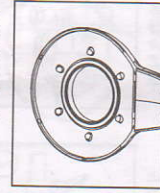


Product Features:

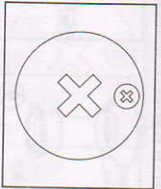
1. Main lens is attached with high magnification small lens for viewing small objects.
2. Lenses of secondary lampshade can be replaced to meet the needs of different magnifications.
3. Main lampshade is installed with 12 LED lights while secondary lampshade is installed with 6 LED lights. It can be used as desk lamp to bring sufficient light.
4. LED lights have two brightness adjusting functions, soft light and strong light.
5. Two auxiliary clips can be rotated to adjust their angles. They are used to fix various objects of different sizes. It's easy to view objects at multiple angles.
6. Main lens is installed with rotary lifting stand, which can be adjusted according to object sizes.
7. Independent 6LED lampshade is installed with replaceable lenses supported by pipe to freely view the components at different positions and of different sizes.
8. The left-right and vertical angles of auxiliary clips can be adjusted. Auxiliary clips can slide horizontally forward and backward. The distance between two auxiliary clips can be adjusted. For various adjustments, screwdriver is not required to repeatedly loosen or tighten screws.
9. Base is equipped with iron, abrasive paper and storage slot to meet daily welding needs.
10. It is compatible with two powers, namely, 110V-240V AC and four 1.5V AA batteries.
11. Lens adopts PMMA material (acrylic) with lighter weight and more convenience. Lens surface adopts hardening treatment to realize hardness 6H. Its better abrasive resistance can effectively avoid lens scratches.
12. Inside iron stand base is slider lock, which can fix iron stand more firmly and avoid the rotation caused by faulty operation.



Annular 12LED



Annular 6LED



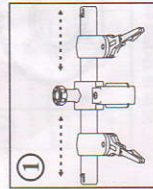
Lens with two magnification functions

Application Range:

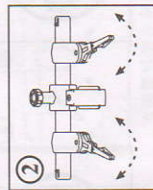
It is applicable to printing, circuit board, machinery, carving, education, gardening, jewelry appraisal, coin and stamp collection etc. And it can also be used separately as a desk lamp.

How to Operate:

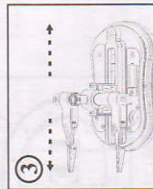
1. Horizontally adjust the angle and distance of two auxiliary clips, and clamp viewed object with auxiliary clips. (Fig. 1, Fig. 2)
2. Based on object size, adjust auxiliary clips forward and backward on the sliding rod to make viewed object aim at lens center. (Fig. 3)
3. Clockwise rotate fixing nut to tighten main lens, and anticlockwise rotate to loosen it. This adjustment is made to adjust the vertical position of main lens so as to realize focusing. (Fig. 4)
4. If secondary lens requires to be used, adjust secondary lampshade pipe stand to make lens center aim at viewed object. If lens of higher magnification requires to be used, replace secondary lens with lens of higher magnification. According to the sign on secondary lampshade, rotate to open and take out secondary lens. Aim lens of higher magnification at the installation slot inside secondary lens frame, then tighten the lens accordingly. (Fig. 5, Fig. 6)
5. In time of insufficient light, turn on LED lights. LED lights have two switchable brightness. Press power switch to start soft light, press the switch again to obtain strong light, and press the switch for the third time to turn off power switch. (Fig. 7, Fig. 8)
6. It is compatible with external power and battery. Insert power cord into the power port at back of desk lamp base, connect 110V-240V AC, turn on the switch on the lampshade to start LED lights. If batteries are required as power, pull power cord from the power port at back of desk lamp base, press the switch on the lampshade to start LED lights. (Fig. 9, Fig. 10)
7. Iron stand base has fixing screws, which can be rotated left and right to loosen and tighten iron stand. (Fig. 11)
8. If it's required to replace abrasive paper, open abrasive paper slot with screwdriver. Close the slot and tighten it with screw after abrasive paper is replaced. (Fig. 12)



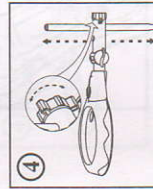
Adjust the distance of auxiliary clips



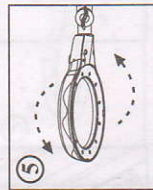
Adjust the angle of auxiliary clips



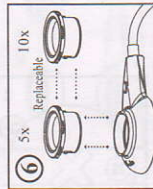
Auxiliary clips can slide on the rod.



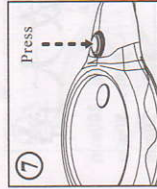
Adjust the height of auxiliary clips



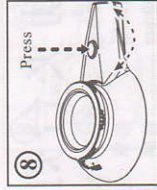
Main lens can be turned left and right.



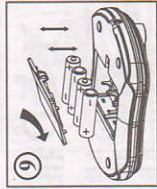
Two lens barrels are interchangeable.



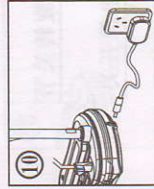
(Annular 12LED) switch



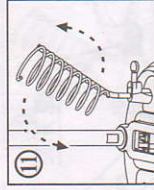
(Annular 6LED) switch



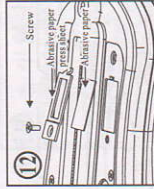
Replace batteries



Use external power



Iron stand can be rotated.



Replace abrasive paper

Installation of Batteries:

Open the battery cover at the bottom of desk lamp base, put four new AA batteries inside according to the "+, -" sign on the bottom of battery Compartment. (Fig. 9)(LED parameter table is enclosed.).

Parameter Table for Battery, Adaptor and LED					
Input voltage	Frequency	Output voltage	Power	Power consumption	Model of batteries
110-240V	50Hz	5V	1.26W	2.52W	1.5V AA x 4

Precautions:

1. Make sure not to view the sun or other strong lights with magnifier.
2. Do not expose it to the sun for long time to avoid fire.
3. Use soft cloth or paper to wipe dirt on lens.
4. Do not wipe lens and shell with chemical liquid like alcohol, gasoline etc.