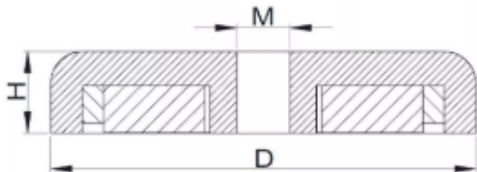


Pot Magnets are best for small sized magnetic products with maximum pull strength. There are many applications for pot magnet, mainly in applications where a strong clamping force is required. Applications include point of sale, window dressing, door and gate clamps, false ceiling clamps, signs and banners, torque limited seals, jigs and fixtures, lighting holders, marketing and exhibition displays, retrieval magnets, industrial fixings, etc.

Pot Magnet

Neodymium pot magnet, with internal thread-metric thread, nickel coating



Model	D (mm)	H (mm)	M	Weight (g)	Breakaway (kg)
NH16	16	5.2	M3	7	4
NH20	20	7.2	M4	14	8
NH25	25	7.7	M5	25	17
NH32	32	7.8	M5	44	27
NH36	36	7.6	M6	55	36
NH42	42	8.8	M6	86	55
NH48	48	10	M8	132	70
NH60	60	12	M8	229	140
NH75	75	15	M10	464	250