

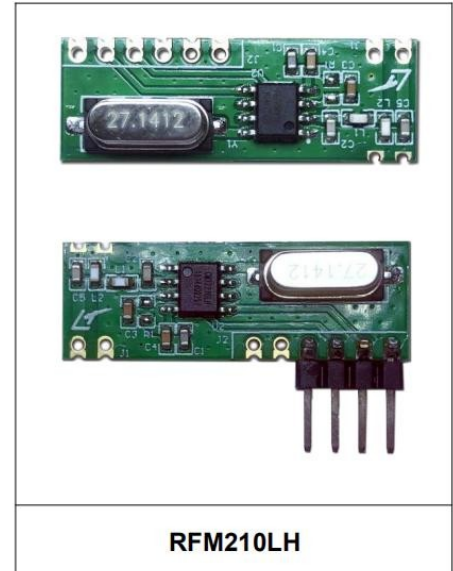
RFM210LH ASK/OOK Wireless Receiver Module

1. Brief introduction

RFM210LH is a ASK/OOK wireless data Receiver , ultra low power consumption, high sensitivity, long distance communication, cost-effective RF receiver module, suitable for ISM band wireless applications.

It has the characteristics of good anti-interference and high reliability, and it can not affect the working distance even in the situation of complex interference environment.

The Module is provided by frequency 315MHz and 433.92MHz, both support 1~5kbps data rate.



2. Features

- Comply with FCC and ETSI
- Strong anti-interference ability, suitable for complex interference environment
- Receiving Sensibility: -109dBm
- Working Frequency: 315MHz,433.92MHz
- Supply Voltage Range: 3.0V-5.5V
- Working Current: 4.5mA
- Sleeping Current: ≤1uA

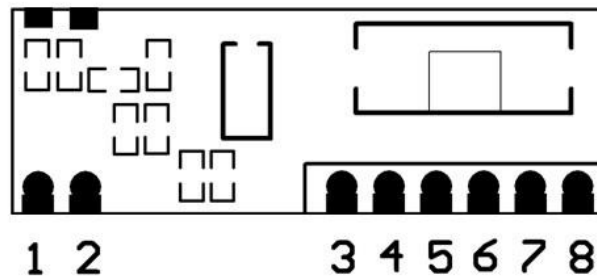
- Data Rate: 1-5 kbps
- Receiver bandwidth:330kHz

3. Application

- Remote Entrance Guard
- Battery Car Security System
- Remote Socket
- Remote Doorbell
- Wireless Data Transmission
- Wireless Lighting Control
- Remote Control Toys
- Remote Control Home Appliances
- Wireless Alarming & Security System

4. Pins out

RFM210LH



Pin	Name	Function
1	ANT	Antenna Input
2	GND	Ground
3	NC	NC
4	NC	NC
5	NC	NC
6	VCC	Positive power
7	DATA	Data Output
8	GND	Ground

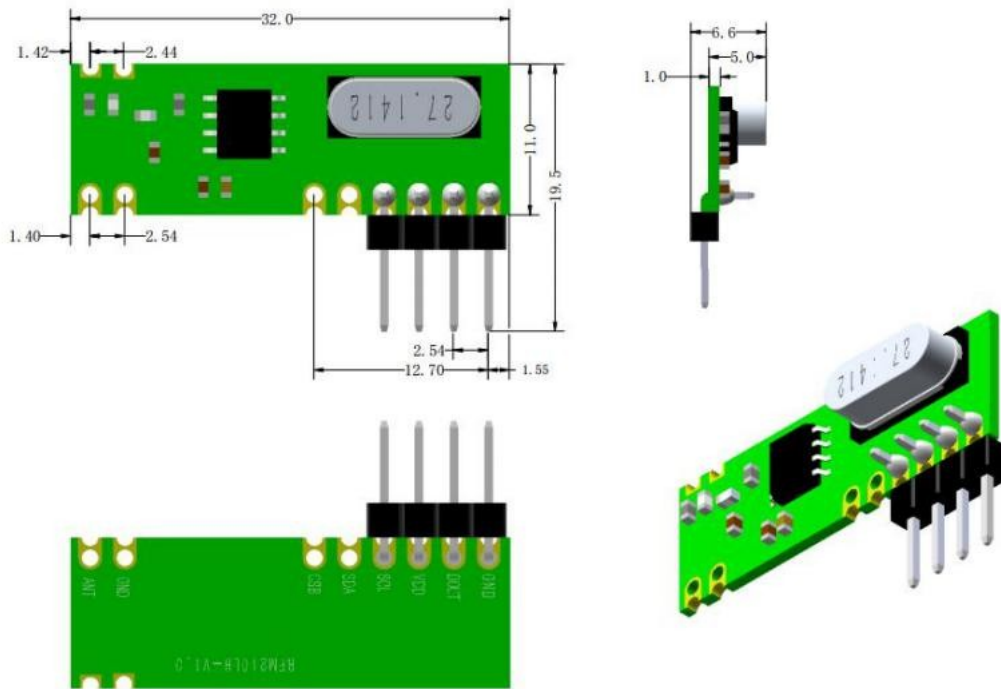
5. Electrical Specifications

Testing Conditions: DC 5V / 25°C

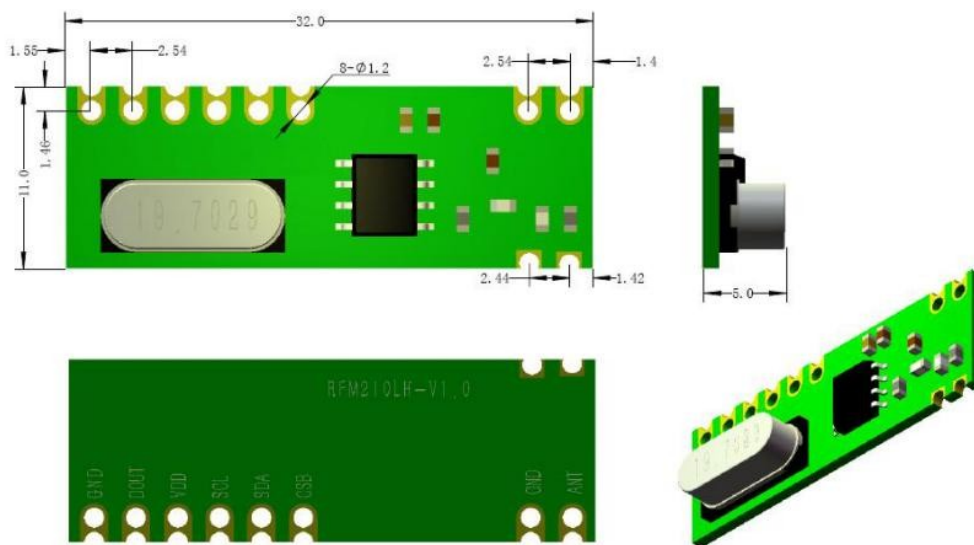
Parameter	Label	Status	MIN.	Typical Value	MAX.	Unit
Frequency Range	Fc	Model: RFM210LH-315D		315		MHz
		Model: RFM210LH-433D		433.92		MHz
Modulation			ASK/OOK			
Sensibility		1 Kbps		-109		dBm
Data Rate	DR		1		5	Kbps
Receiver Bandwidth				330		KHz
Supply Voltage			3.0		5.5	V
Working Current	I _{dd}	433.92MHZ		4.5		mA
Sleeping Current					1	uA
Image Rejection	IMR			30		dB
Working Temperature			-40		+85	°C

6. Dimensions Diagram

RFM210LH



RFM210LH-315D/RFM210LH-433D



RFM210LH-315S1/RFM210LH-433S1

备注：单位（mm）公差（±0.2mm）

7. Order information

Module	Frequency	Voltage
RFM210LH-315S1	315MHz	3.0-5.5V
RFM210LH-433S1	433.92MHz	3.0-5.5V
RFM210LH-315D	315MHz	3.0-5.5V
RFM210LH-433D	433.92MHz	3.0-5.5V