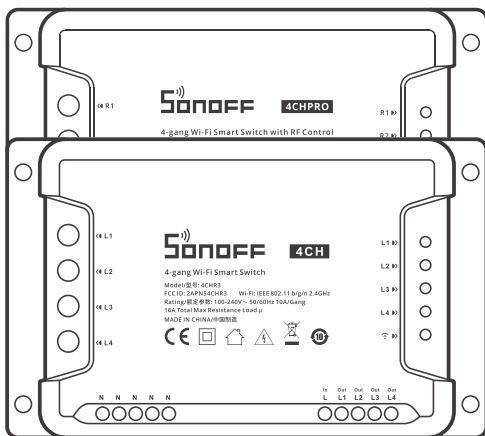




4CH/4CHPRO

User manual V1.2

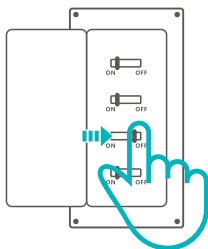


4CHR3: 4-gang Wi-Fi Smart Switch

4CHPROR3: 4-gang Wi-Fi Smart Switch with RF Control

使用说明

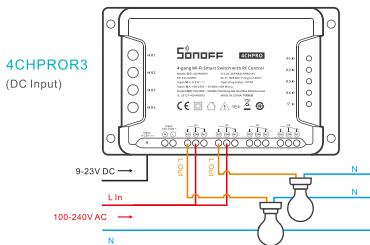
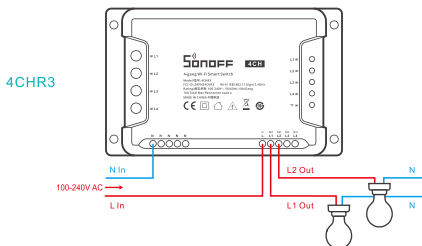
1. 断电



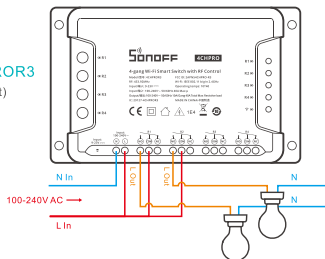
⚠ 设备安装、故障维修请由专业资质电工操作。切勿在设备通电时进行接线操作或触碰到接线端子，以免发生触电危险！

2. 接线

控制灯具接线示意：

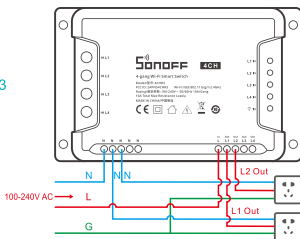


4CHPROR3
(AC Input)

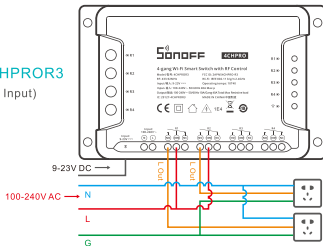


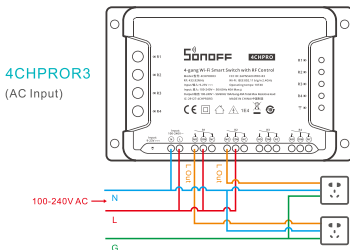
控制插座接线示意(无地线可不接):

4CHR3



4CHPROR3
(DC Input)

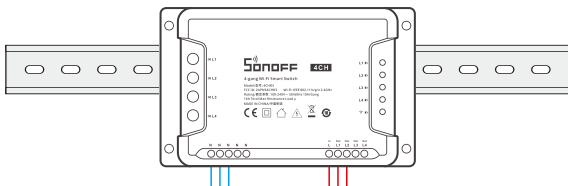




ⓘ 确保线路接入无误。

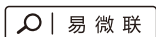
ⓘ 为确保电气安装的安全，必须在4CHR3, 4CHPROR3前面安装符合国家安全标准额定电流为4CHR3(16A), 4CHPROR3(40A)的微型断路器(MCB)或漏电保护断路器(RCBO)。

3. 安装设备



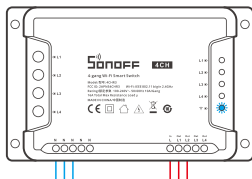
35mm 导轨安装

4. 下载“易微联”APP



Android™ & iOS

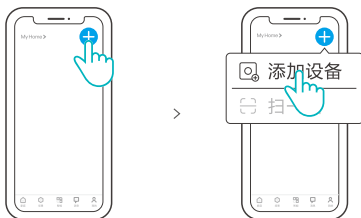
5. 上电



通电后, 设备首次使用, 默认进入快速配网模式。Wi-Fi指示灯呈“两短一长闪烁”。

Ⓢ 三分钟内没有进行配网, 设备将退出快速配网模式。如需再次进入, 长按任意配对按钮5秒直到Wi-Fi指示灯呈“两短一长闪烁”即可。

6. 添加设备



点击“+”, 选择“添加设备”, 再根据 App 提示进行操作。

兼容配网模式

如使用快速添加模式配网失败, 请使用“兼容模式”进行配对。

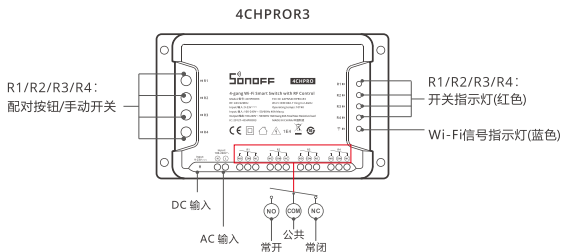
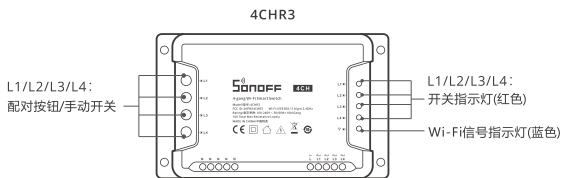
- 1 长按配对按钮5秒直到Wi-Fi指示灯呈“两短一长闪烁”状态, 松开。再次长按配对按钮5秒直到Wi-Fi指示灯呈“快闪”状态, 此时设备进入兼容模式。
- 2 点击“+”, 选择“添加设备”, 再根据app提示进行操作。

产品参数

型号	4CHR3, 4CHPROR3
输入	4CHR3: 100-240V~ 50/60Hz 4CHPROR3: 100-240V~ 50/60Hz (DC: 9-23V===)
最大负载	4CHR3: 10A/通道 16A总负载 4CHPROR3: 10A/通道 40A/总负载
RF	433.92MHz (仅接收)
Wi-Fi	IEEE 802.11 b/g/n 2.4GHz
支持平台	Android & iOS
工作温度	-10°C~40°C
外壳材料	PC V0
产品规格	145x90x34mm

⊕ 4CHR3不支持433.92MHz遥控功能。

产品介绍



⊕ 设备重量<1Kg, 建议安装高度<2米。

Wi-Fi信号指示灯状态说明

指示灯状态	状态描述
两短一长闪烁	快速配网模式
快速闪烁	兼容配网模式
常亮	设备已连接
快闪一下	找不到路由
快闪二下	连接上路由, 但没连上外网
快闪三下	升级中

产品特点

本设备是一款支持互锁/自锁/点动3种工作模式相互切换的四通道智能开关。可随时随地通过手机远程打开或关闭家里的设备，设置定时开关、分享给您的家人一起控制等等。



远程控制



智能定时/延时



语音控制



分享功能



智能场景



自锁模式



互锁模式



点动模式



433MHz控制



上电状态设置



添加摄像头



局域网功能

RF(遥控)配对与清除

4CHPROR3支持使用433.92MHz遥控器控制开关，每通道可独立学习遥控器按键，此功能属于本地近程无线遥控与Wi-Fi网络无关。

学习配对遥控器方法：

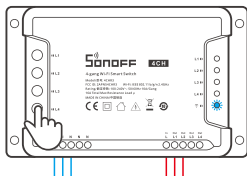
长按将要配对的通道开关键3秒直到Wi-Fi指示灯呈红色“快闪一下”，松开，然后短按遥控器上要配对的按键，Wi-Fi指示灯呈红色再次“快闪一下”则表示配对成功。其它按键按照此方法重复学习配对即可。

清除遥控器配对方法：

长按将要清除配对的通道开关键5秒直到Wi-Fi指示灯呈红色“快闪两下”，松开，然后短按遥控器任意按键，Wi-Fi指示灯呈红色“快闪一下”则表示清码完成。其它按键按照此方法清码即可。

更换设备网络

设备更换新的网络环境使用时，长按任意配置按钮5秒直到Wi-Fi指示灯呈“两短一长闪烁”松开，此时设备进入快速配网模式，即可再次添加。



恢复出厂设置

在eWeLink app端“删除设备”，设备即恢复出厂设置。

常见问题

问：设备添加成功后，显示离线，无法控制？

答：设备刚添加成功后，需要1-2分钟时间连接您的路由器并连网。如果长时间还是显示不在线，请根据Wi-Fi指示灯的状态来判断：

1. 蓝灯2秒快闪一下：说明设备没有连上您的Wi-Fi。

- ① 可能是Wi-Fi密码输入不正确。
- ② 可能是设备离您的路由器太远，信号太弱，或环境有干扰。请先将设备靠近路由器，如无改善，重新添加一遍。
- ③ 设备不能识别5G的Wi-Fi，请选择2.4G的Wi-Fi重新添加。
- ④ 检查您的路由器后台是否开启MAC地址过滤，如有，请关闭。

如果以上均尝试不能解决，请用一部手机开启个人热点，尝试重新添加。

2. 蓝灯2秒快闪两下：说明设备已连接到了Wi-Fi但没有连上外网。

请确认您的Wi-Fi当前连接外网是否稳定、正常。如时好时坏，频繁出现这种双闪情况，说明您的网络不稳定，并非产品原因。

执行标准:GB/T 15092.102

产品中有害物质的名称及含量

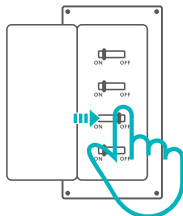
部件名称	有害物质					
	铅 (Pb)	汞 (Hg)	镉 (Cd)	六价铬 (Cr{VI})	多溴联苯 (PBB)	多溴二苯醚 (PBDE)
塑料件	o	o	o	o	o	o
电子元器件	x	o	o	o	o	o
包装盒	o	o	o	o	o	o
PCB板	o	o	o	o	o	o
五金件	o	o	o	o	o	o

本表格依据SJ/T 11364 的规定编制:

- o: 表示该有害物质在该部件所有均质材料中的含量均在GB/T 26572规定的限量要求以下;
 x: 表示该有害物质至少在该部件的某一均质材料中的含量超出GB/T 26572规定的限量要求。

Operating Instruction

1. Power off

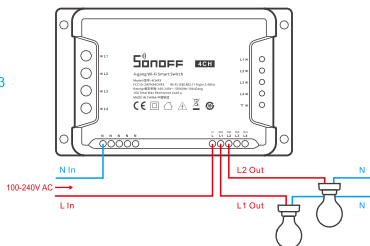


⚠ Please install and maintain the device by a professional electrician. To avoid electric shock hazard, do not operate any connection or contact the terminal connector while the device is powered on!

2. Wiring instruction

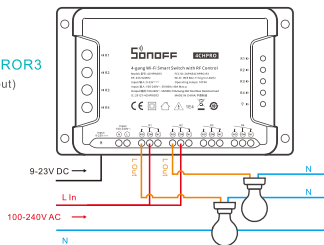
Light fixture wiring instruction:

4CHR3

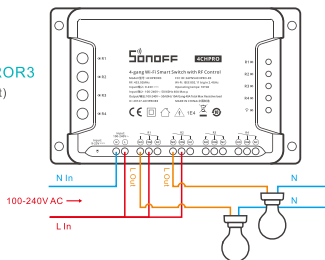


4CHPROR3

(DC Input)

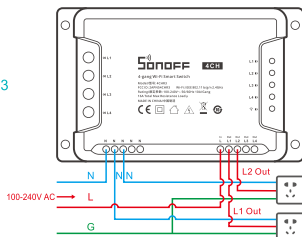


4CHPROR3
(AC Input)

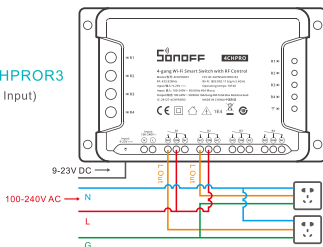


Socket wiring instruction (Don't need to connect if no ground wire):

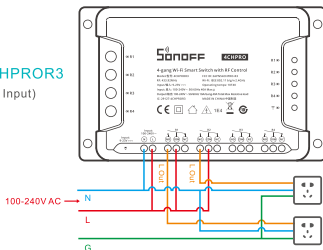
4CHR3



4CHPROR3
(DC Input)



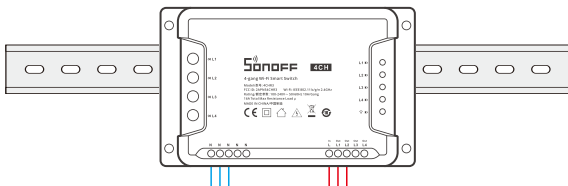
4CHPROR3 (AC Input)



⚠ Make sure all wires are connected correctly.

⚠ To ensure the safety of your electrical installation, it's essential either a Miniature Circuit Breaker (MCB) or a Residual Current Operated Circuit Breaker (RCBO) with an electrical rating of 4CHR3(16A), 4CHR3PRO(40A) has been installed before the 4CHR3, 4CHR3PRO.

3. Equipment Installation

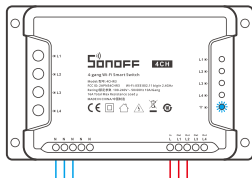


35mm rail installation

4. Download the eWeLink APP



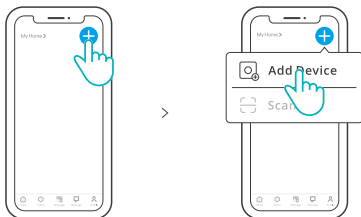
5. Power on



After powering on, the device will enter the quick pairing mode during the first use. The Wi-Fi LED indicator changes in a cycle of two short and one long flash and release.

ⓘ The device will exit the quick pairing mode if not paired within 3mins. If you want to enter this mode, please long press any pairing button for about 5s until the Wi-Fi LED indicator changes in a cycle of two short and one long flash and release.

6. Add the device



Tap "+" and select "Add Device", then operate following the prompt on the App.

Compatible Pairing Mode

If you fail to enter Quick Pairing Mode, please try "Compatible Pairing Mode" to pair.

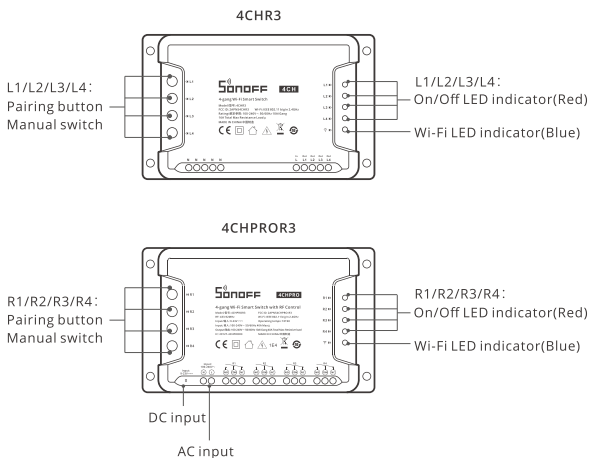
- ❶ Long press Pairing button for 5s until the Wi-Fi LED indicator changes in a cycle of two short flashes and one long flash and release. Long press Pairing button for 5s again until the Wi-Fi LED indicator flashes quickly. Then, the device enters Compatible Pairing Mode.
- ❷ Tap "+" and select "Add Device", then operate following the prompt on the APP.

Specifications

Model	4CHR3, 4CHPROR3
Input	4CHR3: 100-240V~ 50/60Hz 4CHPROR3: 100-240V~ 50/60Hz (DC: 9-23V===)
Max. Load	4CHR3: 10A/Gang 16A Total 4CHPROR3: 10A/Gang 40A Total
RF	433.92MHz (Receive only)
Wi-Fi	IEEE 802.11 b/g/n 2.4GHz
Operating systems	Android & iOS
Working temperature	-10°C~40°C
Material	PC V0
Dimension	145x90x34mm

⚠ 4CHR3 does not support the remote controller with 433.92MHz.

Product Introduction



⚠ The device weight is less than 1 kg.
The installation height of less than 2 m is recommended.

Wi-Fi LED indicator status instruction

Wi-Fi LED indicator status	Status instruction
Flashes (one long and two short)	Quick Pairing Mode
Keeps on	Device is connected successfully
Flashes quickly	Compatible Pairing Mode
Flashes quickly once	Unable to discover the router
Flashes quickly twice	Connect to the router but fail to connect to Wi-Fi
Flashes quickly three times	Upgrading

Features

This device is a 4-Gang Wi-Fi smart switch with self-locking, interlock and inching that allow you to remotely turn on/off connected devices via your smartphone, schedule on or off, share to your family to control together.



Remote Control



Single/Countdown Timing



Voice Control



Share Control



Smart Scene



Self-locking



Interlock



Inching



433MHz Remote Control



Power-on State



Camera Linking



LAN Control

Pairing and Clearing with RF Remote Controller

The 4CHPROR3 supports the remote controller with 433.92MHz frequency brand to turn on/off, and each channel can learn it independently, which is local short-range wireless control not Wi-Fi control.

Pairing Method:

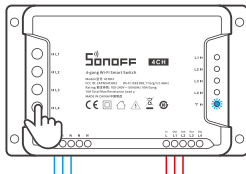
Long press the channel switch button to be paired for 3s until the Wi-Fi LED indicator turns red and "quickly flashes once" and release, then short press the button to be paired on the remote control. If the Wi-Fi LED indicator turns red and "quickly flashes once", it indicates that the pairing is successful.

Clearing Method:

Long press the channel switch button to be cleared for 5s until the Wi-Fi LED indicator turns red and "quickly flashes twice" and release, then short press the button to be cleared on the remote control. If the Wi-Fi LED indicator turns red and "quickly flashes once", it indicates that the code is cleared.

Switch Network

If you need to change the network, Long press the any pairing button for about 5s until the Wi-Fi LED indicator changes in a cycle of two short and one long flash and release, , then the device enters quick pairing mode and you can pair again.



Factory Reset

Deleting the device on the eWeLink app indicates you restore it to factory setting.

Common Problems

Q: Why my device stays "Offline"?

A: The newly added device needs 1 – 2mins to connect Wi-Fi and network. If it stays offline for a long time, please judge these problems by the blue Wi-Fi indicator status:

1. The blue Wi-Fi indicator quickly flashes once per second, which means that the switch failed to connect your Wi-Fi:
 - ① Maybe you have entered a wrong Wi-Fi password.
 - ② Maybe there's too much distance between the switch your router or the environment causes interference, consider getting close to the router. If failed, please add it again.
 - ③ The 5G Wi-Fi network is not supported and only supports the 2.4GHz wireless network.
 - ④ Maybe the MAC address filtering is open. Please turn it off.

If none of the above methods solved the problem, you can open the mobile datanetwork on your phone to create a Wi-Fi hotspot, then add the device again.

2. Blue indicator quickly flashes twice per second, which means your device has connected to Wi-Fi but failed to connect to the server.

Ensure steady enough network. If double flash occurs frequently, which means you access an unsteady network, not a product problem. If the network is normal, try to turn off the power to restart the switch.

FCC compliance statement

1.This device complies with part 15 of the FCC Rules. Operation is subject to the following two conditions:

- (1) This device may not cause harmful interference, and
- (2) This device must accept any interference received, including interference that may cause undesired operation.

2.Changes or modifications not expressly approved by the party responsible for compliance could void the user's authority to operate the equipment.

Note: This equipment has been tested and found to comply with the limits for a Class B digital device, pursuant to part 15 of the FCC Rules. These limits are designed to provide reasonable protection against harmful interference in a residential installation. This equipment generates, uses and can radiate radio frequency energy and, if not installed and used in accordance with the instructions, may cause harmful interference to radio communications. However, there is no guarantee that interference will not occur in a particular installation. If this equipment does cause harmful interference to radio or television reception, which can be determined by turning the equipment off and on, the user is encouraged to try to correct the interference by one or more of the following measures:

- Reorient or relocate the receiving antenna.
- Increase the separation between the equipment and receiver.
- Connect the equipment into an outlet on a circuit different from that to which the receiver is connected.
- Consult the dealer or an experienced radio/TV technician for help.

FCC Radiation Exposure statement:

This equipment complies with FCC radiation exposure limits set forth for an uncontrolled environment.

This equipment should be installed and operated with minimum distance of 20 cm between the radiator and your body.

This transmitter must not be co-located or operating in conjunction with any other antenna or transmitter.

Scatola	Manuale	Borsa
PAP 21	PAP 22	LDPE 4
Carta	Carta	Plastica
RACCOLTA DIFFERENZIATA		
Verifica le disposizioni del tuo Comune. Separa le componenti e conferiscile in modo corretto.		

ISED Notice

This device contains licence-exempt transmitter(s)/receiver(s) that comply with Innovation, Science and Economic Development Canada's licence-exempt RSS(s). Operation is subject to the following two conditions:

(1) This device may not cause interference.

(2) This device must accept any interference, including interference that may cause undesired operation of the device.

This Class B digital apparatus complies with Canadian ICES-003(B).

This device complies with RSS-247 of Industry Canada.

Operation is subject to the condition that this device does not cause harmful interference.

L'émetteur/récepteur exempt de licence contenu dans le présent appareil est conforme aux CNR d'Innovation, Sciences et Développement économique Canada applicables aux appareils radio exempts de licence. L'exploitation est autorisée aux deux conditions suivantes :

(1) L'appareil ne doit pas produire de brouillage;

(2) L'appareil doit accepter tout brouillage radioélectrique subi, même si le brouillage est susceptible d'en compromettre le fonctionnement.

Cet appareil numérique de la Classe B conforme à la norme NMB-003(B) du Canada.

Cet appareil est conforme à la norme RSS - 247 d'Industrie

Canada. Le fonctionnement est soumis à la condition que cet appareil ne provoque pas d'interférences nuisibles.

ISED Radiation Exposure Statement

This equipment complies with ISED radiation exposure limits set forth for an uncontrolled environment. This equipment should be installed and operated with minimum distance of 20 cm between the radiator and your body.

This transmitter must not be co-located or operating in conjunction with any other antenna or transmitter.

Cet équipement est conforme aux limites d'exposition aux rayonnements de la ISED établies pour un environnement non contrôlé.

Cet équipement doit être installé et fonctionner à au moins 20cm de distance d'un radiateur ou de votre corps.

Cet émetteur ne doit pas être co-localisé ou fonctionner en conjonction avec une autre antenne ou un autre émetteur.

Important Safety Instructions

1. CAUTION : Risk of electric shock, This product is not a toy and not intended for use by children. For adult use only.
2. The maximum ambient temperature during use of the appliance must not exceed 40°C.
3. The appliance is suitable for moderate climates only.
4. The ventilation must not be impaired by covering the appliance with items such as newspapers, table cloths, curtains, etc.
5. Naked flame sources, such as candles, must not be placed on the appliance.

For CE Frequency

4CHR3:

Operation frequency Range: 2412-2472MHz

Wi-Fi: 2.4G≤20dBm

4CHPROR3:

Operation frequency Range: 2412-2472MHz,433.92MHz (Receive Only)

Wi-Fi: 2.4G≤20dBm

EU Declaration of Conformity

Hereby, Shenzhen Sonoff Technologies Co., Ltd. declares that the radio equipment type 4CHR3/4CHPROR3 is in compliance with Directive 2014/53/EU. The full text of the EU declaration of conformity is available at the following internet address: <https://sonoff.tech/compliance/>

SAR Warning

Under normal use of condition, this equipment should be kept a separation distance of at least 20 cm between the antenna and the body of the user.

Dans des conditions normales d'utilisation, cet équipement doit être maintenu à une distance d'au moins 20 cm entre l'antenne et le corps de l'utilisateur.

WEEE Disposal and Recycling Information



All products bearing this symbol are waste electrical and electronic equipment (WEEE as in directive 2012/19/EU) which should not be mixed with unsorted household waste. Instead, you should protect human health and the environment by handing over your waste equipment to a designated collection point for the recycling of waste electrical and electronic equipment, appointed by the government or local authorities. Correct disposal and recycling will help prevent potential negative consequences to the environment and human health. Please contact the installer or local authorities for more information about the location as well as terms and conditions of such collection points.

SONOFF

Shenzhen Sonoff Technologies Co., Ltd.

1001, BLDG8, Lianhua Industrial Park, shenzhen, GD, China
ZIP code: 518000 Website: sonoff.tech

Service email: support@itead.cc

MADE IN CHINA

