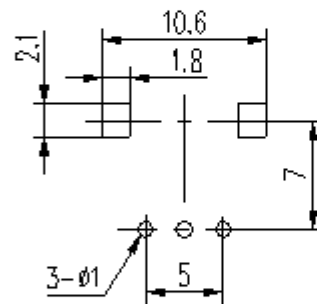


线路板开孔尺寸



电路图



	□	■	□	□	□
L	15	20	25	30	35
I	6	7	12	12	12

未注尺寸公差容许值

10以下	± 0.3
10~100	± 0.5
100以上	± 0.8
角度	$\pm 5^\circ$

						备注		
						WH9011-1		
						外形图		
标记	处数	分区	更改文件号	签名	年月日	视图角法	单位	比例
设计			标准化				mm	2.5:1
审核						共 1 张 第 1 张		
工艺			批准					

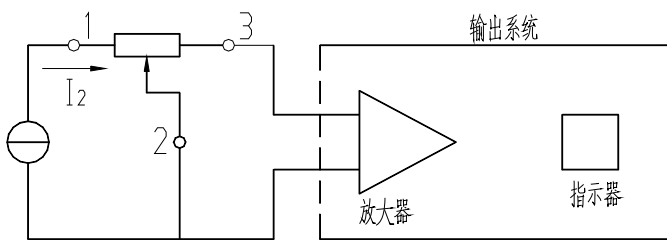
<p>1. General Characteristics</p> <p>1.1 Shape and dimensions In accordance with the outline and dimension drawing.</p> <p>1.2 Operating temperature range -10°C ~ +60°C</p> <p>1.3 Conserving temperature range -20°C ~ +70°C</p> <p>1.4 Test conditions Ordinary temperature (5~35°C) Ordinary humidity (45~85%Rh) Ordinary atmospheric pressure (86~106kPa)</p>	<p>1. 一般特性</p> <p>1.1 形状尺寸 见附图</p> <p>1.2 使用温度范围 -10°C ~ +60°C</p> <p>1.3 保存温度范围 -20°C ~ +70°C</p> <p>1.4 测试条件 常温 (温度 5~35°C) 常湿 (湿度 45~85%Rh) 常压 (气压 86~106kPa)</p>
--	--

2. Mechanical Characteristics	2. 机械特性
-------------------------------	---------

	Item 项目	Measuring condition 测试条件	Specifications 规格
Rotation operation	2.1 Total rotation angle 全回转角度		280°±5°
回转操作	2.2 Operating force 动作力	Measure the rotation torque 测试旋转力矩	20~30gf.cm
	2.3 Lever Stop Strength 止档力矩	Measure when rotate to the tail end by CW or CCW. 顺时针 (或逆时针) 旋到底测试	≥2Kgf.cm

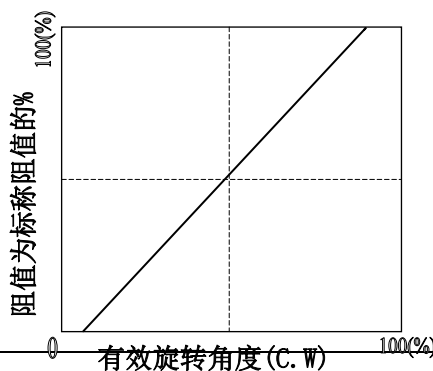
3. Electrical characteristics	3. 电气特性
-------------------------------	---------

Item 项目	Measuring condition 测试条件	Specifications 规格
3.1 Rating 额定值	Power rating(70°C) 70°C时额定功率 W Max operating voltage (virtual value of alternating current) 最高使用电压 (交流峰有效值) V	0.05W 50V
3.2 Total Resistance error 总阻误差	Measurement shall be made at 1、3 terminals of resistance. 在电阻体的 1、3 端测试	≤20%R

Item 项目		Measuring condition 测试条件	Specifications 规格
3.3	Residual resistance 残留电阻	Measurement shall be made separately when potentiometers rotate at 1 terminal and 3 terminal. 电位器旋至 1 与 3 端时分别测试	$R_{1,2} \leq 10 \Omega$ $R_{2,3} \leq 10 \Omega$
3.4	Slider noise 滑动噪声	The residual resistance with the shaft (lever) placed at the end of terminal 1, shall be measured between the terminals 1 and 2. Next with the shaft (lever) placed at the end of terminal 3, the resistance shall be measured between the terminals 2 and 3. If there are tapped terminals, the shaft (lever) shall be turned (moved) and the resulting minimum resistance between the taped terminal and the terminal 2 shall be measured.  按照如图的测试电路测试，以每分钟 2~5 圈的速度转动转轴。	$\leq 68mV$
3.5	Insulation resistance 绝缘电阻	Measure to Apply DC250V. (Between terminal for reinforcing and the other terminals) DC250V 测试	100MΩ min. 不小于 100MΩ
3.6	Withstand voltage 耐电压	Apply A.C250V for 1min. (Between terminal for reinforcing and the other terminals) A.C250V1 分钟	No damage. Arc and dielectric breakdown. 无损伤、电弧和电故障
4. Endurance		4. 耐久特性	
Item 项目		Measuring condition 测试条件	Specifications 规格
4.1	Heat resistance 耐热特性	Temperature $70 \pm 2^\circ C$ Time 16 hours After that , leave in ordinary temp and humidity for an hour. Then measure. 温度 $70 \pm 2^\circ C$ 时间 16 小时 然后放置在常温和湿度下一个小时再测试。	Item 2.2 2.3 3.2 3.3 3.4 The same as the initial spec. 项目: 2.2 2.3 3.2 3.3 3.4 同初始规格

4.2	Moisture resistance 耐湿特性	Temperature 40±2℃ Humidity 90~95%Rh Time 96±4 hours After that , leave in ordinary temp and humidity for an hour. Then measure. 温度 40±2℃ 湿度 90~95%Rh 时间 96±4 小时 然后放置在常温和湿度下一个小时再测试。	The same as above. 同上
4.3	Low temperature resistance 耐寒特性	Temperature -25±2℃ Time 2 hours After that , leave in ordinary temp and humidity for an hour. Then measure. 温度 -25±2℃ 时间 2 小时 然后放置在常温和湿度下一个小时再测试。	The same as above. 同上
4.4	rotation life 旋转寿命	Operation times 10,000T Reciprocate 10,000 times at a speed of 10~15 times reciprocation per minute with no-load in the ordinary temp and humidity. 操作次数 10,000T 在常温、常湿, 无负载的情况下, 以每分钟往复10~15次的速度进行 10,000 次	Item 2.2 2.3 3.3 3.4 The same as the initial spec. Item 3.2: ΔR≤25%R 项目 2.2 2.3 3.3 3.4: 同初始规格 项目 3.2: ΔR≤25%R

附图：
(线性规律)



设计	审核	批准
印章		日期