

YE SERIES (Single Phase One-Stage Filters)



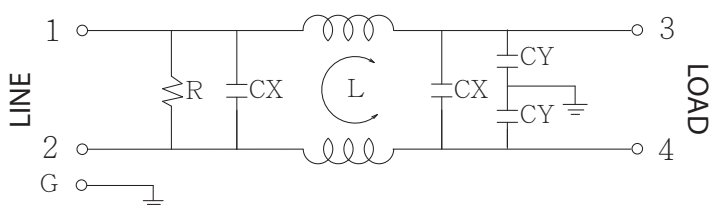
Features

- The YE series is a special designed single phase one-stage filter with both common mode and normal mode performing high noise suppression.
- The rated current can be offered from 5 to 30 amps.
- Various output selections such as fast-on terminal, M4 screw terminals and lead wire.
- Low leakage current version upon requested.
- Approved by UL ,CSA ,VDE and CE
- Application for Electrical and electronic equipment, Household equipment, Automation equipment, Fitness machine
- Custom-specific versions are available on request.

Technical Specification

Rated voltage	125/250VAC
Rated currents	Up to 30A
Operating frequency	50/60Hz
Hipot rating(Line-to-line)	1450VDC
Hipot rating(Line-to-ground)	2250VDC
Operating temperature	-25~+85°C
Safety compliance	5A (UL,CSA) ; 5 to 30A (VDE, CE)

Typical electrical schematic

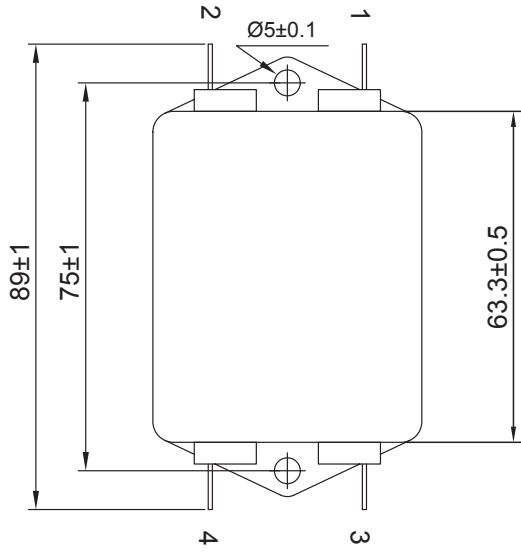


Filter Selection Table

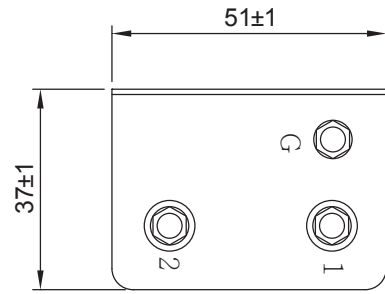
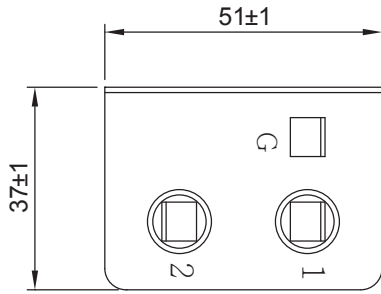
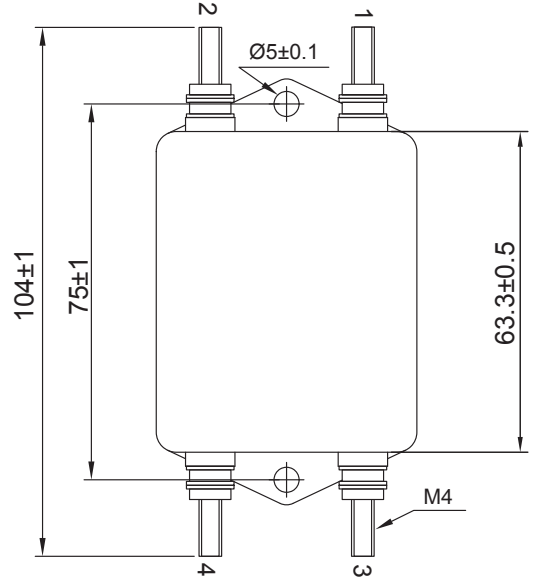
Part NO.	Rated Current (A)	Inductance L(mH)	Capacitance CX(μ F)	Capacitance CY(pF)	Resistance R(ohm)	Output connections
YE05T1	5	5	0.1	3300	10M	Fast-on terminal (optional lead-wire)
YE10T1	10	3	0.1	3300	10M	
YE15T1	15	2	0.1	3300	10M	
YE20T1	20	0.9	0.1	3300	10M	
YE30T1	30	0.5	0.1	3300	10M	
YE05T4	5	5	0.1	3300	10M	M4 Screw terminals
YE10T4	10	3	0.1	3300	10M	
YE15T4	15	2	0.1	3300	10M	
YE20T4	20	0.9	0.1	3300	10M	
YE30T4	30	0.5	0.1	3300	10M	

Physical Dimensions: (mm)

YE-T1

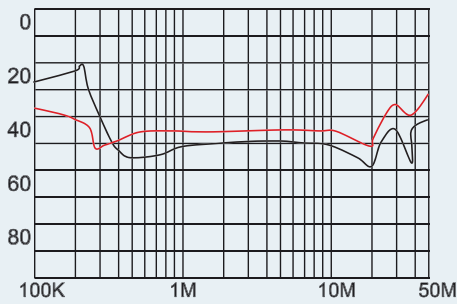


YE-T4

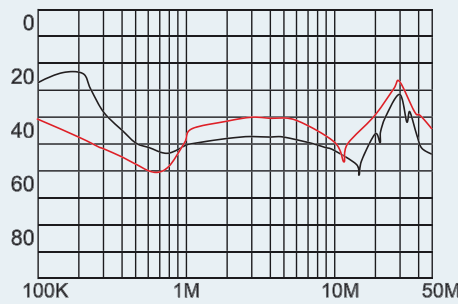


Typical filter attenuation (Common mode — Normal mode —)

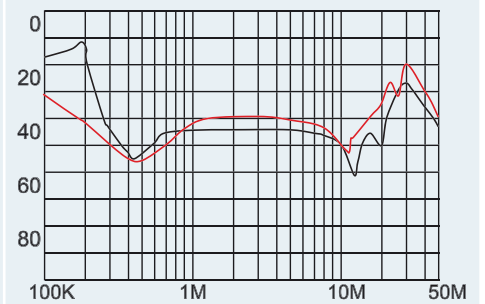
YE05



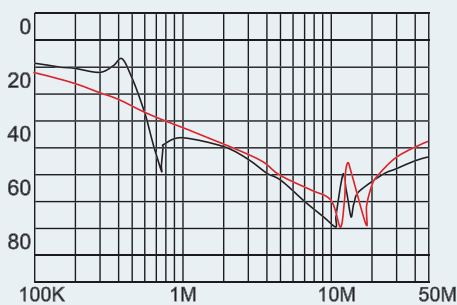
YE10



YE15



YE20



YE30

