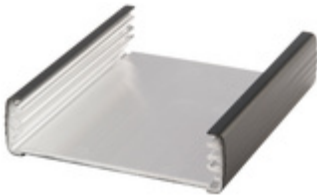


# ABPU 820-0200



Alubos 820  
Enclosure profiles, open on one side

Order no.: **84827200**

**Colour of enclosure group**

Black, similar to RAL 9005; special colours on request

**Protection class**

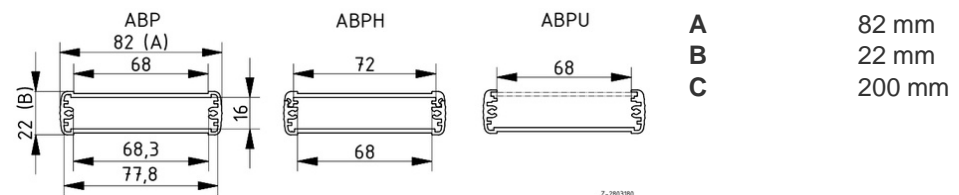
ABP, ABPH: up to IP 65/DIN EN 60529; ABPU: IP 40/DIN EN 60529

**Enclosure material**

Extruded profiles: Al Mg Si 0.5 powder-coated; diecast lid: GB Al Si 12, powder-coated; seal: TPE; for details see Technical Information

Scope of delivery: Enclosure profile. Please order front panel for ABPU separately.

Note: C = profile length, special lengths on request.



**Technical drawings**

Catalogue drawing in DXF format:  
[84827200\\_ABPU-820-0200.dxf](#) (3.8 MB)  
Catalogue drawing in PDF format:  
[84827200\\_ABPU-820-0200.pdf](#) (84 KB)  
3D product data in STEP format:  
[Registration necessary](#)  
Basic drawing for processing work:  
[84827200\\_ABPU-820-200-G.dxf](#) (236 KB)  
Basic drawing for processing work:  
[84827200\\_ABPU-820-0200-G.dxf](#) (236 KB)

**Assembly instructions**

[Alubos-ABPH-....-....pdf](#) (124 KB)  
[Alubos-ABM-....-SAL\(-BE\).pdf](#) (69 KB)  
[Alubos-AB-WL-..pdf](#) (195 KB)  
[Alubos-AB-....-HS.pdf](#) (67 KB)

**Chapter download**

[Alubos\\_GB.pdf](#) (865 KB)