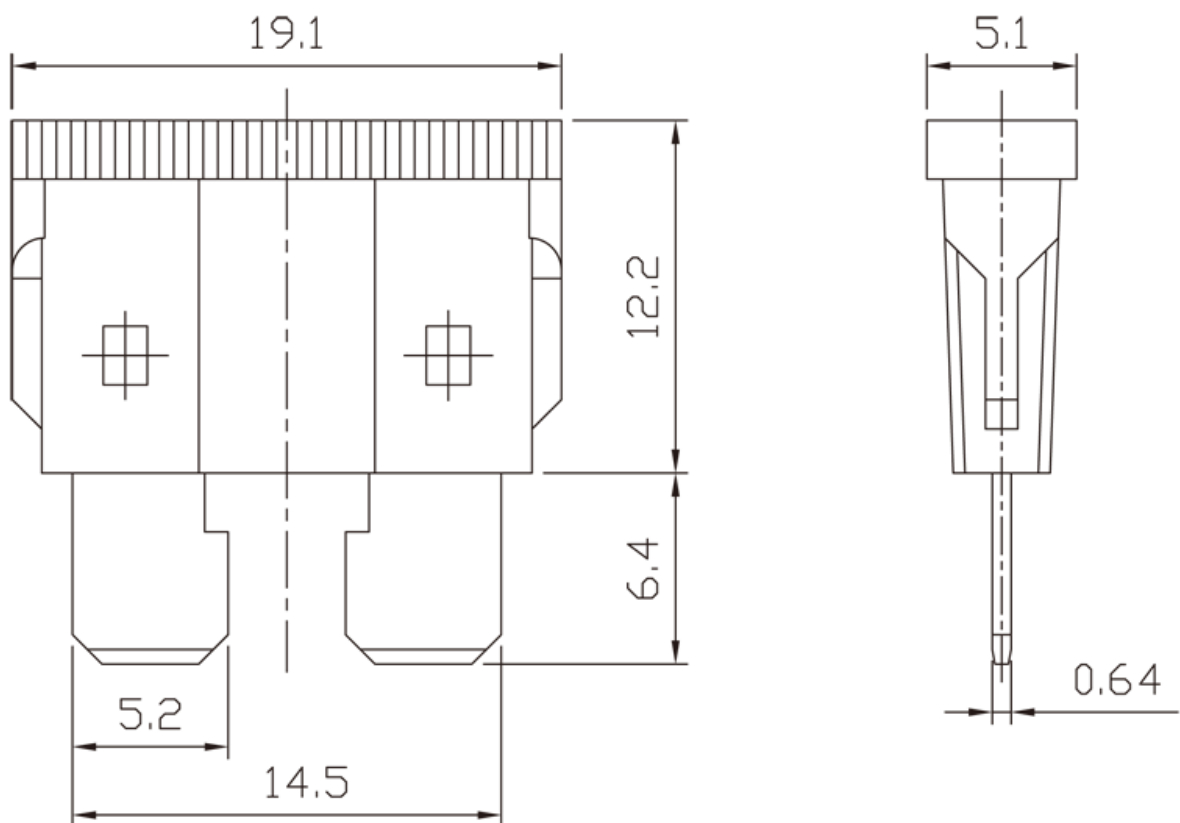


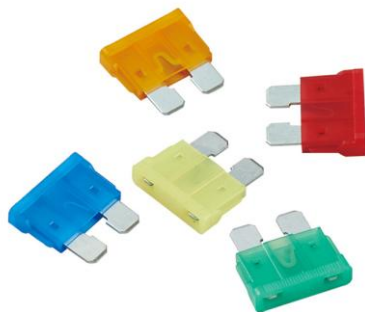


## ATSPUG-IN FUSES (BLADE FUSES)

- Fast Acting
- Voltage Rating : DC32V or less
- Interrupting Rating: 1000A @32VDC
- Operating Temperature Range : -40°C to +125°C
- Complies with  
SAE J1284 / JASOD612 / ISO 8820-3
- Materials:
  1. Zinc Alloy
  2. Plastic

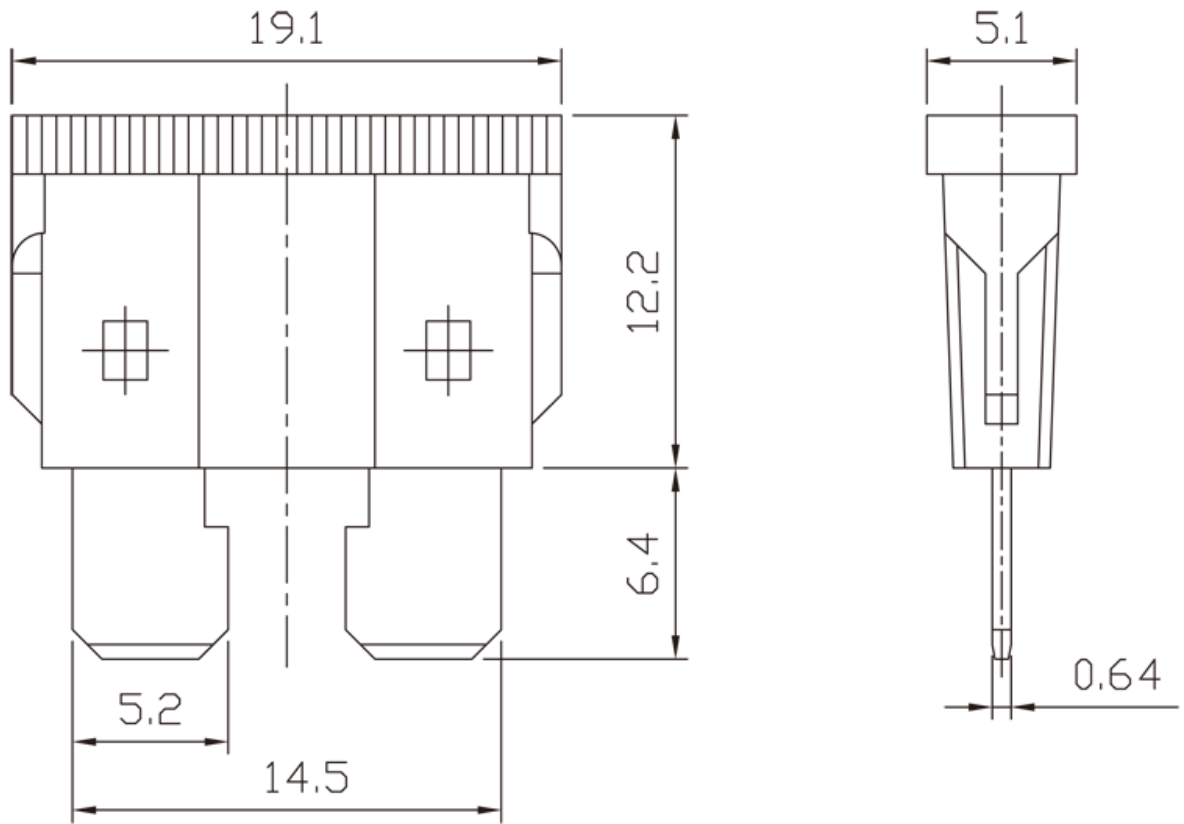


Test Current	Opening Time	
	Min.	Max.
110%	100hrs.	---
135%	0.75 s	600 s
160%	0.25 s	50 s
200%	0.15 s	5 s
350%	0.04 s	0.5 s
600%	0.02 s	0.1 s
Item No.	Ampere	Color
ATS 1	1 A	█
ATS 2	2 A	█
ATS 3	3 A	█
ATS 4	4 A	█
ATS 5	5 A	█
ATS 7.5	7.5 A	█
ATS 10	10 A	█
ATS 15	15 A	█
ATS 20	20 A	█
ATS 25	25 A	█
ATS 30	30 A	█
ATS 35	35 A	█
ATS 40	40 A	█















- Fast Acting
- Voltage Rating : DC58V or less
- Interrupting Rating: 1000A @58VDC
- Operating Temperature Range : -40°C to +125°C
- Complies with SAE J1284 / JASOD612 / ISO 8820-3

- Materials :
  - Zinc Alloy
  - Plastic



### Time-Current Characteristics

Test Current	Opening Time	
	Min.	Max.
110%	100hrs.	---
135%	0.75 s	600 s
160%	0.25 s	50 s
200%	0.15 s	5 s
350%	0.04 s	0.5 s
600%	0.02 s	0.1 s
Item No.	Ampere	Color
ATS 1	1 A	█

ATS 2	2 A	
ATS 3	3 A	
ATS 4	4 A	
ATS 5	5 A	
ATS 7.5	7.5 A	
ATS 10	10 A	
ATS 15	15 A	
ATS 20	20 A	
ATS 25	25 A	
ATS 30	30 A	
ATS 35	35 A	
ATS 40	40 A	

<http://www.zeeman.com.tw/web/en-us/ATS.html>