

# HEF4093B

## Quad 2-input NAND Schmitt trigger

Rev. 8 — 21 November 2011

Product data sheet

### 1. General description

The HEF4093B is a quad two-input NAND gate. Each input has a Schmitt trigger circuit. The gate switches at different points for positive-going and negative-going signals. The difference between the positive voltage ( $V_{T+}$ ) and the negative voltage ( $V_{T-}$ ) is defined as hysteresis voltage ( $V_H$ ).

It operates over a recommended  $V_{DD}$  power supply range of 3 V to 15 V referenced to  $V_{SS}$  (usually ground). Unused inputs must be connected to  $V_{DD}$ ,  $V_{SS}$ , or another input.

### 2. Features and benefits

- Schmitt trigger input discrimination
- Fully static operation
- 5 V, 10 V, and 15 V parametric ratings
- Standardized symmetrical output characteristics
- Specified from  $-40\text{ }^{\circ}\text{C}$  to  $+85\text{ }^{\circ}\text{C}$  and  $-40\text{ }^{\circ}\text{C}$  to  $+125\text{ }^{\circ}\text{C}$
- Complies with JEDEC standard JESD 13-B

### 3. Applications

- Wave and pulse shapers
- Astable multivibrators
- Monostable multivibrators

### 4. Ordering information

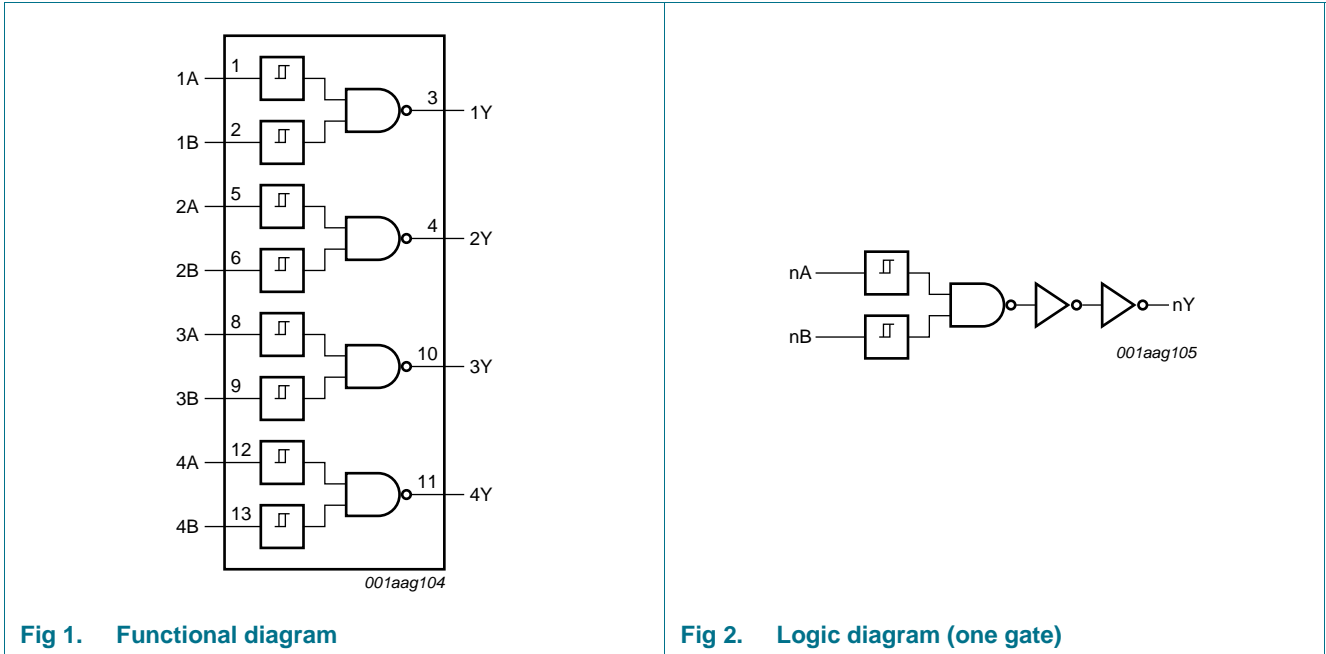
Table 1. Ordering information

All types operate from  $-40\text{ }^{\circ}\text{C}$  to  $+125\text{ }^{\circ}\text{C}$

| Type number | Package |  |          |
|-------------|---------|--|----------|
|             | Name    | Description  | Version  |
| HEF4093BP   | DIP14   | plastic dual in-line package; 14 leads (300 mil)           | SOT27-1  |
| HEF4093BT   | SO14    | plastic small outline package; 14 leads; body width 3.9 mm | SOT108-1 |

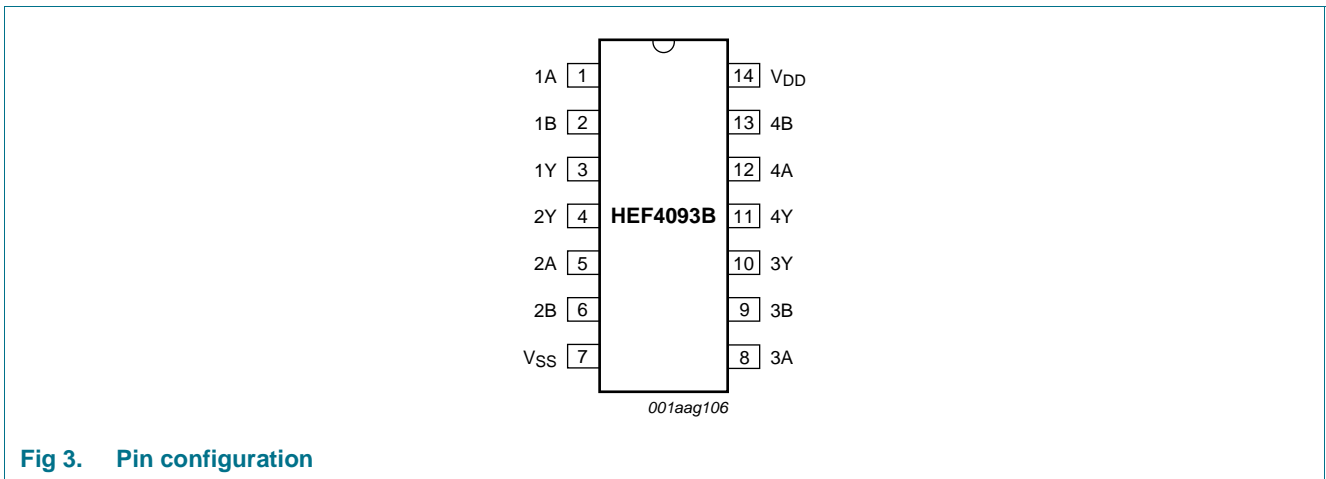


## 5. Functional diagram



## 6. Pinning information

### 6.1 Pinning



## 6.2 Pin description

Table 2. Pin description

| Symbol          | Pin          | Description    |
|-----------------|--------------|----------------|
| 1A to 4A        | 1, 5, 8, 12  | input          |
| 1B to 4B        | 2, 6, 9, 13  | input          |
| 1Y to 4Y        | 3, 4, 10, 11 | output         |
| V <sub>DD</sub> | 14           | supply voltage |
| V <sub>SS</sub> | 7            | ground (0 V)   |

## 7. Functional description

Table 3. Function table<sup>[1]</sup>

| Input |    | Output |
|-------|----|--------|
| nA    | nB | nY     |
| L     | L  | H      |
| L     | H  | H      |
| H     | L  | H      |
| H     | H  | L      |

[1] H = HIGH voltage level; L = LOW voltage level.

## 8. Limiting values

Table 4. Limiting values

In accordance with the Absolute Maximum Rating System (IEC 60134). Voltages are referenced to V<sub>SS</sub> = 0 V (ground).

| Symbol           | Parameter               | Conditions  | Min  | Max                   | Unit |    |
|------------------|-------------------------|---|------|-----------------------|------|----|
| V <sub>DD</sub>  | supply voltage          |   | -0.5 | +18                   | V    |    |
| I <sub>IK</sub>  | input clamping current  | V <sub>I</sub> < -0.5 V or V <sub>I</sub> > V <sub>DD</sub> + 0.5 V | -    | ±10                   | mA   |    |
| V <sub>I</sub>   | input voltage           |   | -0.5 | V <sub>DD</sub> + 0.5 | V    |    |
| I <sub>OK</sub>  | output clamping current | V <sub>O</sub> < -0.5 V or V <sub>O</sub> > V <sub>DD</sub> + 0.5 V | -    | ±10                   | mA   |    |
| I <sub>I/O</sub> | input/output current    |   | -    | ±10                   | mA   |    |
| I <sub>DD</sub>  | supply current          |   | -    | 50                    | mA   |    |
| T <sub>stg</sub> | storage temperature     |   | -65  | +150                  | °C   |    |
| T <sub>amb</sub> | ambient temperature     |   | -40  | +125                  | °C   |    |
| P <sub>tot</sub> | total power dissipation | T <sub>amb</sub> = -40 °C to +125 °C                                |      |                       |      |    |
|                  |                         | DIP14   | [1]  | -                     | 750  | mW |
|                  |                         | SO14  | [2]  | -                     | 500  | mW |
| P                | power dissipation       | per output  | -    | 100                   | mW   |    |

[1] For DIP14 packages: above T<sub>amb</sub> = 70 °C, P<sub>tot</sub> derates linearly with 12 mW/K.

[2] For SO14 packages: above T<sub>amb</sub> = 70 °C, P<sub>tot</sub> derates linearly with 8 mW/K.

## 9. Recommended operating conditions

Table 5. Recommended operating conditions

| Symbol    | Parameter           | Conditions  | Min | Max      | Unit |
|-----------|---------------------|-------------|-----|----------|------|
| $V_{DD}$  | supply voltage      |             | 3   | 15       | V    |
| $V_I$     | input voltage       |             | 0   | $V_{DD}$ | V    |
| $T_{amb}$ | ambient temperature | in free air | -40 | +125     | °C   |

## 10. Static characteristics

Table 6. Static characteristics

$V_{SS} = 0$  V;  $V_I = V_{SS}$  or  $V_{DD}$ ; unless otherwise specified.

| Symbol   | Parameter                 | Conditions                                   | $V_{DD}$ | $T_{amb} = -40$ °C |           | $T_{amb} = +25$ °C |           | $T_{amb} = +85$ °C |           | $T_{amb} = +125$ °C |           | Unit    |
|----------|---------------------------|--|----------|--------------------|-----------|--------------------|-----------|--------------------|-----------|---------------------|-----------|---------|
|          |                           |  |          | Min                | Max       | Min                | Max       | Min                | Max       | Min                 | Max       |         |
| $V_{OH}$ | HIGH-level output voltage | $ I_O  < 1$ $\mu$ A                          | 5 V      | 4.95               | -         | 4.95               | -         | 4.95               | -         | 4.95                | -         | V       |
|          |                           |  | 10 V     | 9.95               | -         | 9.95               | -         | 9.95               | -         | 9.95                | -         | V       |
|          |                           |  | 15 V     | 14.95              | -         | 14.95              | -         | 14.95              | -         | 14.95               | -         | V       |
| $V_{OL}$ | LOW-level output voltage  | $ I_O  < 1$ $\mu$ A                          | 5 V      | -                  | 0.05      | -                  | 0.05      | -                  | 0.05      | -                   | 0.05      | V       |
|          |                           |  | 10 V     | -                  | 0.05      | -                  | 0.05      | -                  | 0.05      | -                   | 0.05      | V       |
|          |                           |  | 15 V     | -                  | 0.05      | -                  | 0.05      | -                  | 0.05      | -                   | 0.05      | V       |
| $I_{OH}$ | HIGH-level output current | $V_O = 2.5$ V                                | 5 V      | -                  | -1.7      | -                  | -1.4      | -                  | -1.1      | -                   | -1.1      | mA      |
|          |                           |  | 5 V      | -                  | -0.64     | -                  | -0.5      | -                  | -0.36     | -                   | -0.36     | mA      |
|          |                           |  | 10 V     | -                  | -1.6      | -                  | -1.3      | -                  | -0.9      | -                   | -0.9      | mA      |
|          |                           |  | 15 V     | -                  | -4.2      | -                  | -3.4      | -                  | -2.4      | -                   | -2.4      | mA      |
| $I_{OL}$ | LOW-level output current  | $V_O = 0.4$ V                                | 5 V      | 0.64               | -         | 0.5                | -         | 0.36               | -         | 0.36                | -         | mA      |
|          |                           |  | 10 V     | 1.6                | -         | 1.3                | -         | 0.9                | -         | 0.9                 | -         | mA      |
|          |                           |  | 15 V     | 4.2                | -         | 3.4                | -         | 2.4                | -         | 2.4                 | -         | mA      |
| $I_I$    | input leakage current     |  | 15 V     | -                  | $\pm 0.1$ | -                  | $\pm 0.1$ | -                  | $\pm 1.0$ | -                   | $\pm 1.0$ | $\mu$ A |
| $I_{DD}$ | supply current            | all valid input combinations;<br>$I_O = 0$ A | 5 V      | -                  | 0.25      | -                  | 0.25      | -                  | 7.5       | -                   | 7.5       | $\mu$ A |
|          |                           |  | 10 V     | -                  | 0.5       | -                  | 0.5       | -                  | 15.0      | -                   | 15.0      | $\mu$ A |
|          |                           |  | 15 V     | -                  | 1.0       | -                  | 1.0       | -                  | 30.0      | -                   | 30.0      | $\mu$ A |
| $C_I$    | input capacitance         |  |          | -                  | -         | -                  | 7.5       | -                  | -         | -                   | pF        |         |

## 11. Dynamic characteristics

**Table 7. Dynamic characteristics**

$T_{amb} = 25\text{ }^{\circ}\text{C}$ ;  $C_L = 50\text{ pF}$ ;  $t_r = t_f \leq 20\text{ ns}$ ; wave forms see [Figure 4](#); test circuit see [Figure 5](#); unless otherwise specified.

| Symbol           | Parameter                          | Conditions       | V <sub>DD</sub> | Extrapolation formula <sup>[1]</sup> | Min | Typ | Max | Unit |
|------------------|------------------------------------|------------------|-----------------|--------------------------------------|-----|-----|-----|------|
| t <sub>PHL</sub> | HIGH to LOW propagation delay      | nA or nB to nY   | 5 V             | 63 ns + (0.55 ns/pF)C <sub>L</sub>   | -   | 90  | 185 | ns   |
|                  |                                    |                  | 10 V            | 29 ns + (0.23 ns/pF)C <sub>L</sub>   | -   | 40  | 80  | ns   |
|                  |                                    |                  | 15 V            | 22 ns + (0.16 ns/pF)C <sub>L</sub>   | -   | 30  | 60  | ns   |
| t <sub>PLH</sub> | LOW to HIGH propagation delay      | nA or nB to nY   | 5 V             | 58 ns + (0.55 ns/pF)C <sub>L</sub>   | -   | 85  | 170 | ns   |
|                  |                                    |                  | 10 V            | 29 ns + (0.23 ns/pF)C <sub>L</sub>   | -   | 40  | 80  | ns   |
|                  |                                    |                  | 15 V            | 22 ns + (0.16 ns/pF)C <sub>L</sub>   | -   | 30  | 60  | ns   |
| t <sub>THL</sub> | HIGH to LOW output transition time | nY to LOW        | 5 V             | 10 ns + (1.00 ns/pF)C <sub>L</sub>   | -   | 60  | 120 | ns   |
|                  |                                    |                  | 10 V            | 9 ns + (0.42 ns/pF)C <sub>L</sub>    | -   | 30  | 60  | ns   |
|                  |                                    |                  | 15 V            | 6 ns + (0.28 ns/pF)C <sub>L</sub>    | -   | 20  | 40  | ns   |
| t <sub>TLH</sub> | LOW to HIGH output transition time | nA or nB to HIGH | 5 V             | 10 ns + (1.00 ns/pF)C <sub>L</sub>   | -   | 60  | 120 | ns   |
|                  |                                    |                  | 10 V            | 9 ns + (0.42 ns/pF)C <sub>L</sub>    | -   | 30  | 60  | ns   |
|                  |                                    |                  | 15 V            | 6 ns + (0.28 ns/pF)C <sub>L</sub>    | -   | 20  | 40  | ns   |

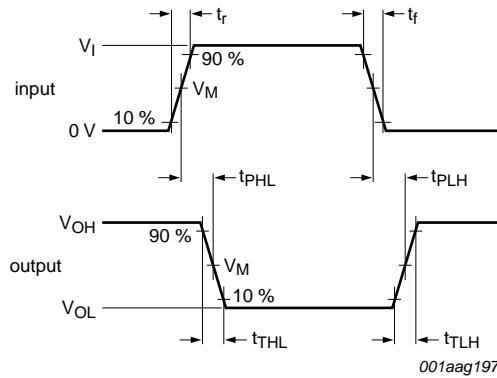
[1] Typical value of the propagation delay and output transition time can be calculated with the extrapolation formula (C<sub>L</sub> in pF).

**Table 8. Dynamic power dissipation**

$V_{SS} = 0\text{ V}$ ;  $t_r = t_f \leq 20\text{ ns}$ ;  $T_{amb} = 25\text{ }^{\circ}\text{C}$ .

| Symbol         | Parameter                 | V <sub>DD</sub> | Typical formula   | where:  |
|----------------|---------------------------|-----------------|---|---|
| P <sub>D</sub> | dynamic power dissipation | 5 V             | $P_D = 1300 \times f_i + \Sigma(f_o \times C_L) \times V_{DD}^2$ ( $\mu\text{W}$ )  | $f_i$ = input frequency in MHz;   |
|                |                           | 10 V            | $P_D = 6400 \times f_i + \Sigma(f_o \times C_L) \times V_{DD}^2$ ( $\mu\text{W}$ )  | $f_o$ = output frequency in MHz;  |
|                |                           | 15 V            | $P_D = 18700 \times f_i + \Sigma(f_o \times C_L) \times V_{DD}^2$ ( $\mu\text{W}$ ) | C <sub>L</sub> = output load capacitance in pF;<br>$\Sigma(f_o \times C_L)$ = sum of the outputs;<br>V <sub>DD</sub> = supply voltage in V. |

12. Waveforms

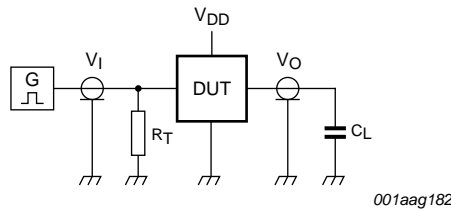


Measurement points are given in [Table 9](#).  
 Logic levels:  $V_{OL}$  and  $V_{OH}$  are typical output voltage levels that occur with the output load.  
 $t_r$ ,  $t_f$  = input rise and fall times.

Fig 4. Propagation delay and output transition time

Table 9. Measurement points

| Supply voltage | Input       | Output      |
|----------------|-------------|-------------|
| $V_{DD}$       | $V_M$       | $V_M$       |
| 5 V to 15 V    | $0.5V_{DD}$ | $0.5V_{DD}$ |



Test data given in [Table 10](#).  
 Definitions for test circuit:  
 DUT = Device Under Test.  
 $C_L$  = load capacitance including jig and probe capacitance.  
 $R_T$  = termination resistance should be equal to the output impedance  $Z_o$  of the pulse generator.

Fig 5. Test circuit

Table 10. Test data

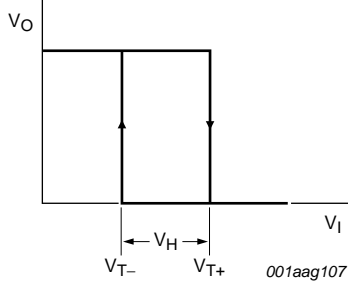
| Supply voltage | Input                | Load         |
|----------------|----------------------|--------------|
| $V_{DD}$       | $V_I$                | $C_L$        |
| 5 V to 15 V    | $V_{SS}$ or $V_{DD}$ | $\leq 20$ ns |
|                |                      | 50 pF        |

### 13. Transfer characteristics

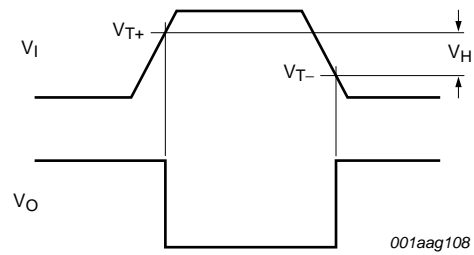
**Table 11. Transfer characteristics**

$V_{SS} = 0\text{ V}$ ;  $T_{amb} = 25\text{ }^\circ\text{C}$ ; see [Figure 6](#) and [Figure 7](#).

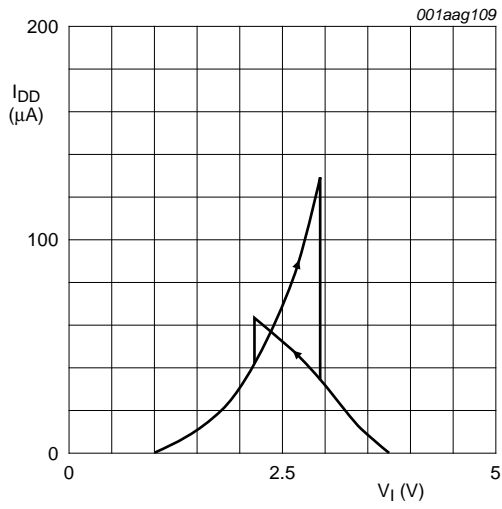
| Symbol   | Parameter                        | Conditions | $V_{DD}$ | Min | Typ | Max  | Unit |
|----------|----------------------------------|------------|----------|-----|-----|------|------|
| $V_{T+}$ | positive-going threshold voltage |            | 5 V      | 1.9 | 2.9 | 3.5  | V    |
|          |                                  |            | 10 V     | 3.6 | 5.2 | 7    | V    |
|          |                                  |            | 15 V     | 4.7 | 7.3 | 11   | V    |
| $V_{T-}$ | negative-going threshold voltage |            | 5 V      | 1.5 | 2.2 | 3.1  | V    |
|          |                                  |            | 10 V     | 3   | 4.2 | 6.4  | V    |
|          |                                  |            | 15 V     | 4   | 6.0 | 10.3 | V    |
| $V_H$    | hysteresis voltage               |            | 5 V      | 0.4 | 0.7 | -    | V    |
|          |                                  |            | 10 V     | 0.6 | 1.0 | -    | V    |
|          |                                  |            | 15 V     | 0.7 | 1.3 | -    | V    |



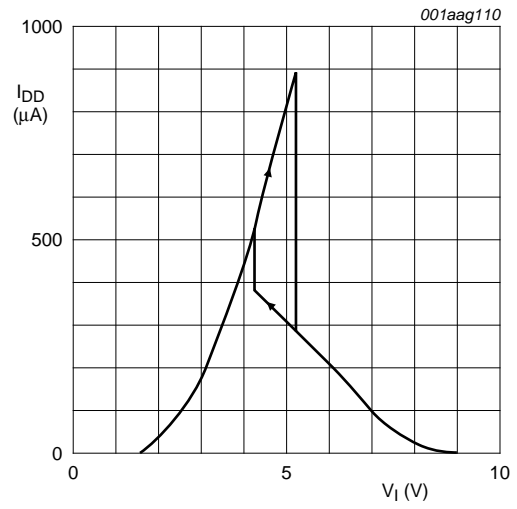
**Fig 6. Transfer characteristic**



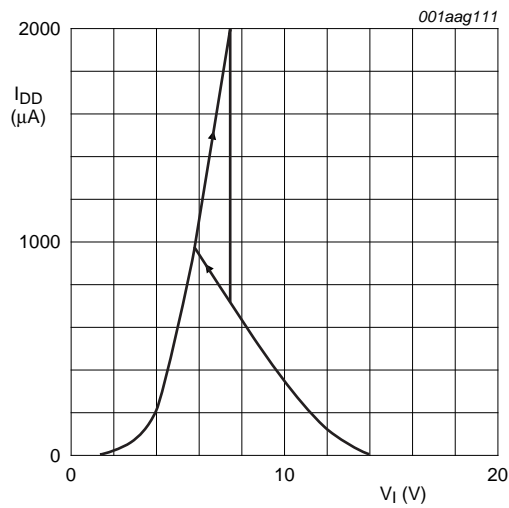
**Fig 7. Waveforms showing definition of  $V_{T+}$  and  $V_{T-}$  (between limits at 30 % and 70 %) and  $V_H$**



a.  $V_{DD} = 5 V$ ;  $T_{amb} = 25\text{ }^{\circ}C$



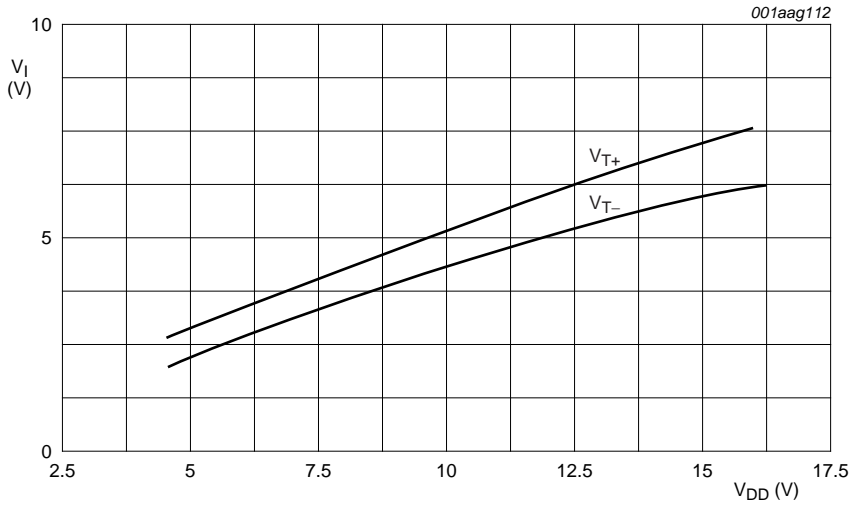
b.  $V_{DD} = 10 V$ ;  $T_{amb} = 25\text{ }^{\circ}C$



c.  $V_{DD} = 15 V$ ;  $T_{amb} = 25\text{ }^{\circ}C$

**Fig 8. Typical drain current as a function of input**





T<sub>amb</sub> = 25 °C.

Fig 9. Typical switching levels as a function of supply voltage

### 14. Application information

Some examples of applications for the HEF4093B are:

- Wave and pulse shapers
- Astable multivibrators
- Monostable multivibrators

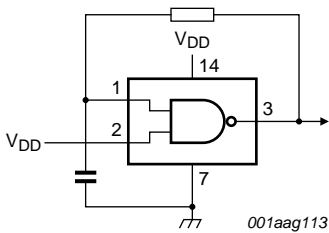


Fig 10. Astable multivibrator

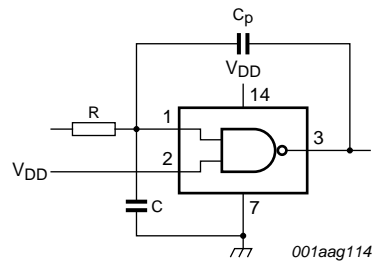


Fig 11. Schmitt trigger driven via a high-impedance input

If a Schmitt trigger is driven via a high-impedance ( $R > 1 \text{ k}\Omega$ ), then it is necessary to incorporate a capacitor C with a value of  $\frac{C}{C_p} > \frac{V_{DD} - V_{SS}}{V_H}$ ; otherwise oscillation can occur on the edges of a pulse.

C<sub>p</sub> is the external parasitic capacitance between inputs and output; the value depends on the circuit board layout.

**Remark:** The two inputs may be connected together, but this will result in a larger through-current at the moment of switching.

15. Package outline

DIP14: plastic dual in-line package; 14 leads (300 mil)

SOT27-1

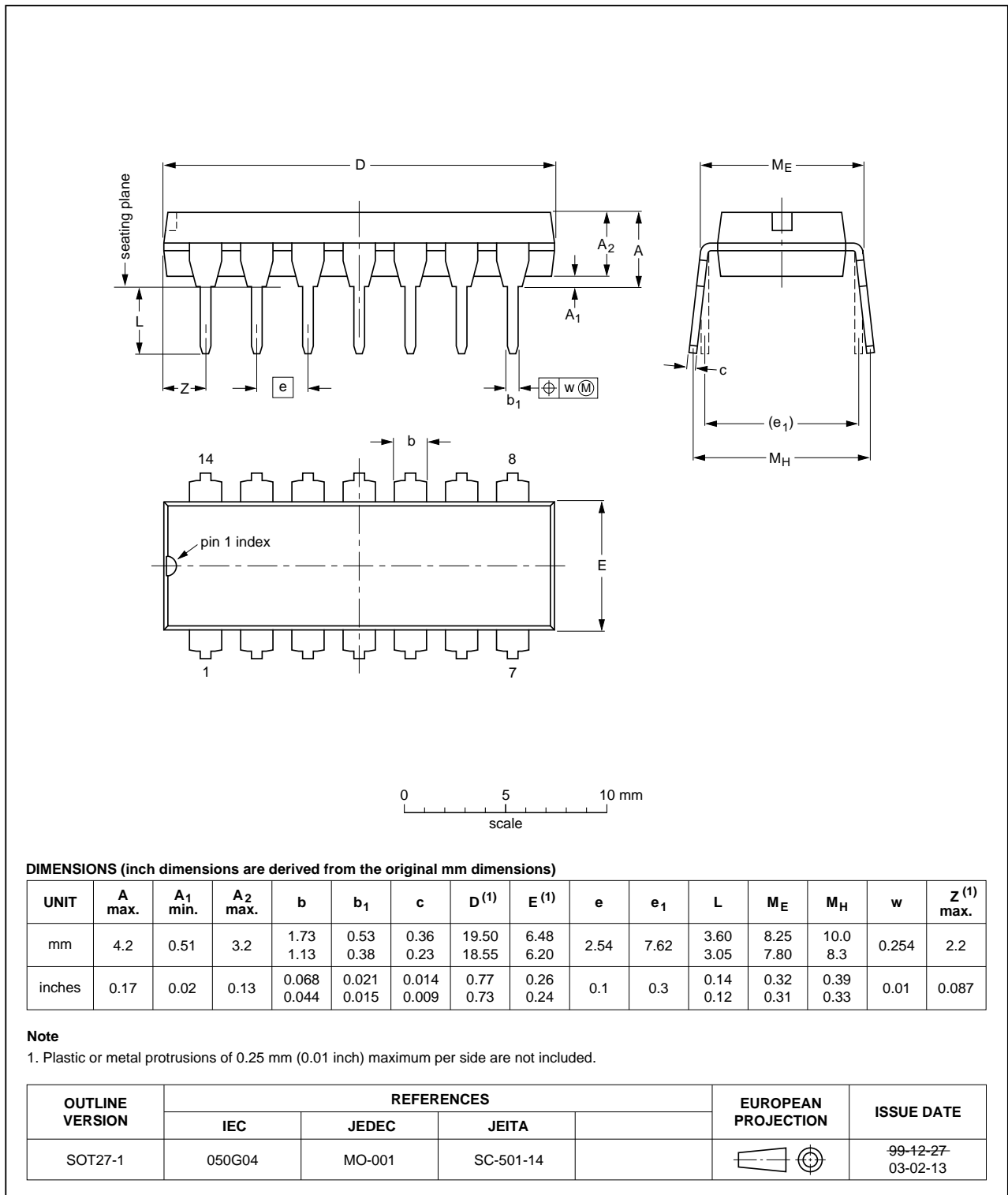


Fig 12. Package outline SOT27-1 (DIP14)

SO14: plastic small outline package; 14 leads; body width 3.9 mm

SOT108-1

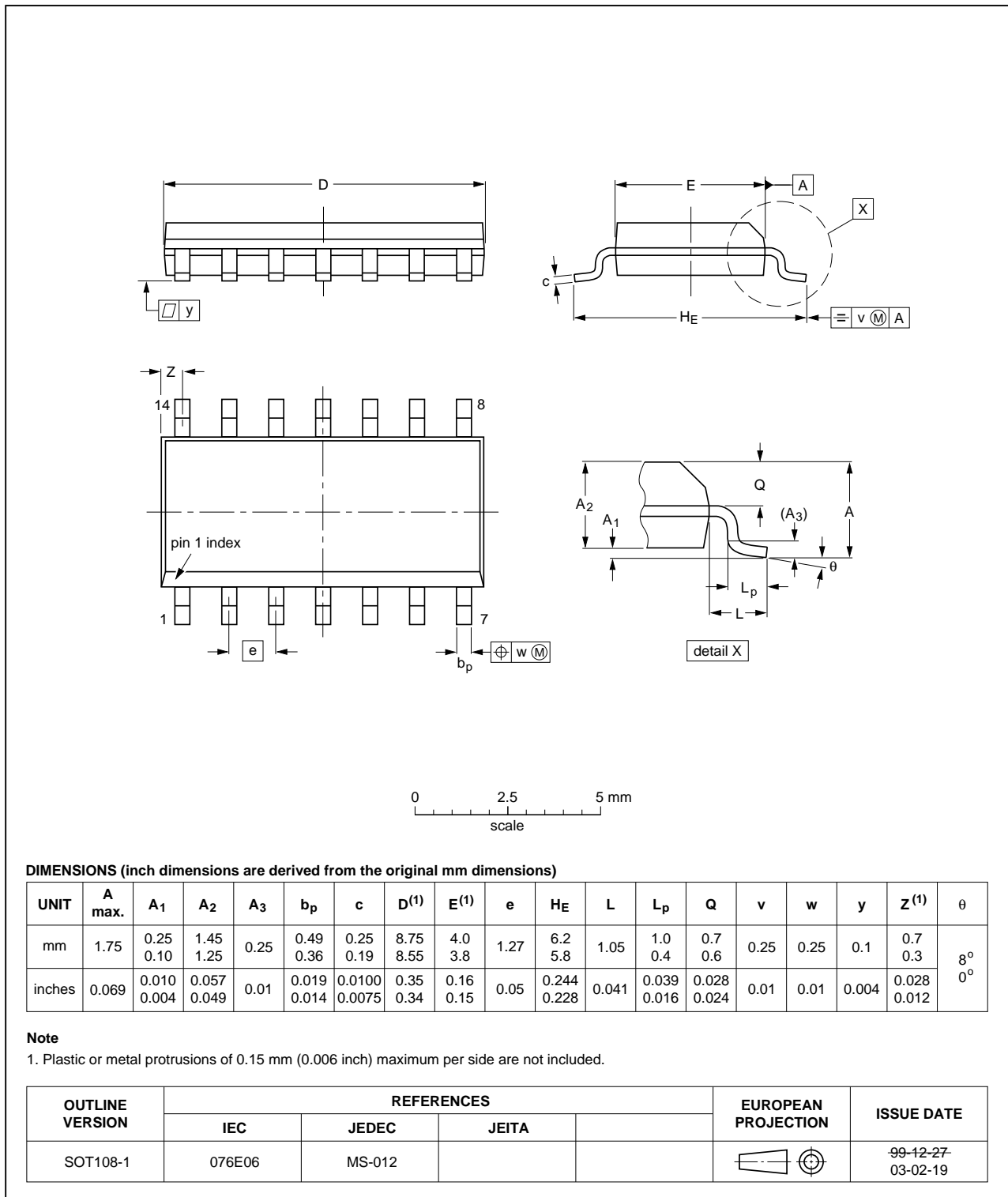


Fig 13. Package outline SOT108-1 (SO14)

## 16. Revision history

Table 12. Revision history

| Document ID      | Release date  | Data sheet status     | Change notice | Supersedes       |
|------------------|---|-----------------------|---------------|------------------|
| HEF4093B v.8     | 20111121  | Product data sheet    | -             | HEF4093B v.7     |
| Modifications:   | • <a href="#">Table 6</a> : I <sub>OH</sub> minimum values changed to maximum |                       |               |                  |
| HEF4093B v.7     | 20100901  | Product data sheet    | -             | HEF4093B v.6     |
| HEF4093B v.6     | 20091202  | Product data sheet    | -             | HEF4093B v.5     |
| HEF4093B v.5     | 20090728  | Product data sheet    | -             | HEF4093B v.4     |
| HEF4093B v.4     | 20080612  | Product data sheet    | -             | HEF4093B_CNV v.3 |
| HEF4093B_CNV v.3 | 19950101  | Product specification | -             | HEF4093B_CNV v.2 |
| HEF4093B_CNV v.2 | 19950101  | Product specification | -             | -                |

## 17. Legal information

### 17.1 Data sheet status

| Document status <sup>[1][2]</sup> | Product status <sup>[3]</sup> | Definition  |
|-----------------------------------|-------------------------------|---|
| Objective [short] data sheet      | Development                   | This document contains data from the objective specification for product development. |
| Preliminary [short] data sheet    | Qualification                 | This document contains data from the preliminary specification.                       |
| Product [short] data sheet        | Production                    | This document contains the product specification.                                     |

[1] Please consult the most recently issued document before initiating or completing a design.

[2] The term 'short data sheet' is explained in section "Definitions".

[3] The product status of device(s) described in this document may have changed since this document was published and may differ in case of multiple devices. The latest product status information is available on the Internet at URL <http://www.nxp.com>.

### 17.2 Definitions

**Draft** — The document is a draft version only. The content is still under internal review and subject to formal approval, which may result in modifications or additions. NXP Semiconductors does not give any representations or warranties as to the accuracy or completeness of information included herein and shall have no liability for the consequences of use of such information.

**Short data sheet** — A short data sheet is an extract from a full data sheet with the same product type number(s) and title. A short data sheet is intended for quick reference only and should not be relied upon to contain detailed and full information. For detailed and full information see the relevant full data sheet, which is available on request via the local NXP Semiconductors sales office. In case of any inconsistency or conflict with the short data sheet, the full data sheet shall prevail.

**Product specification** — The information and data provided in a Product data sheet shall define the specification of the product as agreed between NXP Semiconductors and its customer, unless NXP Semiconductors and customer have explicitly agreed otherwise in writing. In no event however, shall an agreement be valid in which the NXP Semiconductors product is deemed to offer functions and qualities beyond those described in the Product data sheet.

### 17.3 Disclaimers

**Limited warranty and liability** — Information in this document is believed to be accurate and reliable. However, NXP Semiconductors does not give any representations or warranties, expressed or implied, as to the accuracy or completeness of such information and shall have no liability for the consequences of use of such information.

In no event shall NXP Semiconductors be liable for any indirect, incidental, punitive, special or consequential damages (including - without limitation - lost profits, lost savings, business interruption, costs related to the removal or replacement of any products or rework charges) whether or not such damages are based on tort (including negligence), warranty, breach of contract or any other legal theory.

Notwithstanding any damages that customer might incur for any reason whatsoever, NXP Semiconductors' aggregate and cumulative liability towards customer for the products described herein shall be limited in accordance with the *Terms and conditions of commercial sale* of NXP Semiconductors.

**Right to make changes** — NXP Semiconductors reserves the right to make changes to information published in this document, including without limitation specifications and product descriptions, at any time and without notice. This document supersedes and replaces all information supplied prior to the publication hereof.

**Suitability for use** — NXP Semiconductors products are not designed, authorized or warranted to be suitable for use in life support, life-critical or safety-critical systems or equipment, nor in applications where failure or

malfunction of an NXP Semiconductors product can reasonably be expected to result in personal injury, death or severe property or environmental damage. NXP Semiconductors accepts no liability for inclusion and/or use of NXP Semiconductors products in such equipment or applications and therefore such inclusion and/or use is at the customer's own risk.

**Applications** — Applications that are described herein for any of these products are for illustrative purposes only. NXP Semiconductors makes no representation or warranty that such applications will be suitable for the specified use without further testing or modification.

Customers are responsible for the design and operation of their applications and products using NXP Semiconductors products, and NXP Semiconductors accepts no liability for any assistance with applications or customer product design. It is customer's sole responsibility to determine whether the NXP Semiconductors product is suitable and fit for the customer's applications and products planned, as well as for the planned application and use of customer's third party customer(s). Customers should provide appropriate design and operating safeguards to minimize the risks associated with their applications and products.

NXP Semiconductors does not accept any liability related to any default, damage, costs or problem which is based on any weakness or default in the customer's applications or products, or the application or use by customer's third party customer(s). Customer is responsible for doing all necessary testing for the customer's applications and products using NXP Semiconductors products in order to avoid a default of the applications and the products or of the application or use by customer's third party customer(s). NXP does not accept any liability in this respect.

**Limiting values** — Stress above one or more limiting values (as defined in the Absolute Maximum Ratings System of IEC 60134) will cause permanent damage to the device. Limiting values are stress ratings only and (proper) operation of the device at these or any other conditions above those given in the Recommended operating conditions section (if present) or the Characteristics sections of this document is not warranted. Constant or repeated exposure to limiting values will permanently and irreversibly affect the quality and reliability of the device.

**Terms and conditions of commercial sale** — NXP Semiconductors products are sold subject to the general terms and conditions of commercial sale, as published at <http://www.nxp.com/profile/terms>, unless otherwise agreed in a valid written individual agreement. In case an individual agreement is concluded only the terms and conditions of the respective agreement shall apply. NXP Semiconductors hereby expressly objects to applying the customer's general terms and conditions with regard to the purchase of NXP Semiconductors products by customer.

**No offer to sell or license** — Nothing in this document may be interpreted or construed as an offer to sell products that is open for acceptance or the grant, conveyance or implication of any license under any copyrights, patents or other industrial or intellectual property rights.

**Export control** — This document as well as the item(s) described herein may be subject to export control regulations. Export might require a prior authorization from competent authorities.

**Non-automotive qualified products** — Unless this data sheet expressly states that this specific NXP Semiconductors product is automotive qualified, the product is not suitable for automotive use. It is neither qualified nor tested in accordance with automotive testing or application requirements. NXP Semiconductors accepts no liability for inclusion and/or use of non-automotive qualified products in automotive equipment or applications.

In the event that customer uses the product for design-in and use in automotive applications to automotive specifications and standards, customer (a) shall use the product without NXP Semiconductors' warranty of the product for such automotive applications, use and specifications, and (b) whenever customer uses the product for automotive applications beyond

NXP Semiconductors' specifications such use shall be solely at customer's own risk, and (c) customer fully indemnifies NXP Semiconductors for any liability, damages or failed product claims resulting from customer design and use of the product for automotive applications beyond NXP Semiconductors' standard warranty and NXP Semiconductors' product specifications.

## 17.4 Trademarks

Notice: All referenced brands, product names, service names and trademarks are the property of their respective owners.

## 18. Contact information

For more information, please visit: <http://www.nxp.com>

For sales office addresses, please send an email to: [salesaddresses@nxp.com](mailto:salesaddresses@nxp.com)

## 19. Contents

|      |  |    |
|------|--|----|
| 1    | General description . . . . .              | 1  |
| 2    | Features and benefits . . . . .            | 1  |
| 3    | Applications . . . . .                     | 1  |
| 4    | Ordering information . . . . .             | 1  |
| 5    | Functional diagram . . . . .               | 2  |
| 6    | Pinning information . . . . .              | 2  |
| 6.1  | Pinning . . . . .                          | 2  |
| 6.2  | Pin description . . . . .                  | 3  |
| 7    | Functional description . . . . .           | 3  |
| 8    | Limiting values . . . . .                  | 3  |
| 9    | Recommended operating conditions . . . . . | 4  |
| 10   | Static characteristics . . . . .           | 4  |
| 11   | Dynamic characteristics . . . . .          | 5  |
| 12   | Waveforms . . . . .                        | 6  |
| 13   | Transfer characteristics . . . . .         | 7  |
| 14   | Application information . . . . .          | 9  |
| 15   | Package outline . . . . .                  | 10 |
| 16   | Revision history . . . . .                 | 12 |
| 17   | Legal information . . . . .                | 13 |
| 17.1 | Data sheet status . . . . .                | 13 |
| 17.2 | Definitions . . . . .                      | 13 |
| 17.3 | Disclaimers . . . . .                      | 13 |
| 17.4 | Trademarks . . . . .                       | 14 |
| 18   | Contact information . . . . .              | 14 |
| 19   | Contents . . . . .                         | 15 |

Please be aware that important notices concerning this document and the product(s) described herein, have been included in section 'Legal information'.

© NXP B.V. 2011.

All rights reserved.

For more information, please visit: <http://www.nxp.com>

For sales office addresses, please send an email to: [salesaddresses@nxp.com](mailto:salesaddresses@nxp.com)

Date of release: 21 November 2011

Document identifier: HEF4093B

# Mouser Electronics

Authorized Distributor

Click to View Pricing, Inventory, Delivery & Lifecycle Information:

[NXP:](#)

[HEF4093BP,652](#) [HEF4093BT,652](#) [HEF4093BT,653](#)