

DC Power Plug Series

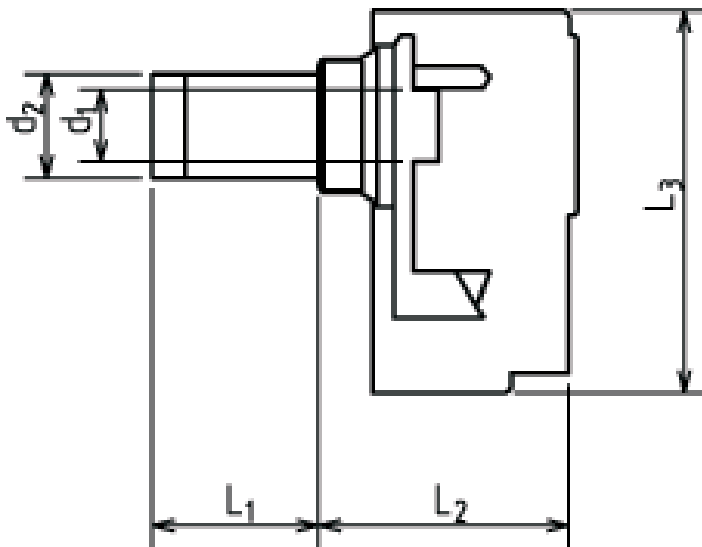
KLS1-DCP-04 (DC Plug)

Technical parameters:

Contact resistance: 0.03Ω, max
 Insulation resistance: 100MΩ, min
 Pressure: AC500V (50Hz) / 1minute
 Rated Load: DC30V,1.0A
 Actuating Force: 3~20N
 Life: 5000 times
 Operating Temperature: -30°C ~ 70°C

Material:

Housing Material: PBT or PA66
 Center Pin Material: Brass



Part No.	d1 (mm)	d2 (mm)	L1 (mm)	L2 (mm)	L3 (mm)
2.1A	2.1	5.5	14.0	13.0	20.0
2.1B	2.1	5.5	9.0	13.0	20.0
2.5A	2.5	5.5	14.0	13.0	20.0
2.5B	2.5	5.5	9.0	13.0	20.0
1.35A	1.35	3.45	9.0	11.5	20.0
1.0A	1.0	3.8	9.0	11.5	20.0

ORDER INFORMATION

Product NO.: KLS1-DCP-04-2.1A

