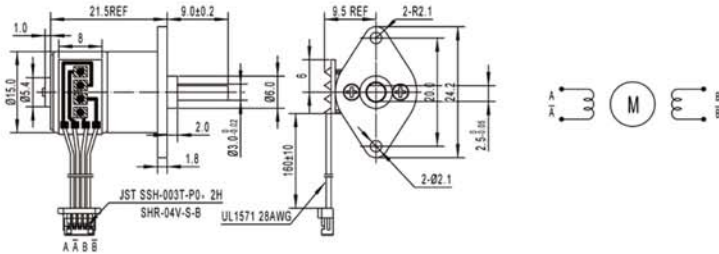


KLS23-GM12-15BY 12X10mm gearbox plus 15by stepping motor

- Small size dc gear motor with low speed and big torque
- 12mm gear motor provide 0.05Nm torque and more reliable
- Suitable to small diameter, low noise and big torque application
- Reduction Ratio: 3、5、10、20、30、50、63、100、150、210、250、298、380



Gear Motor Dimensions (mm)



Stepping Gear motor Technical Data

Motor model No.	Rated voltage	No. of Phase	Step Angle	Gear Ratio	Resistance	Holding Torque	current	Pull in Rate	
	VDC				Ω	g.cm	mA	pps	
GM12-15BY-30	5	2	18°	1/30	10	300	500	800pps	
GM12-15BY-50	5	2	18°	1/50	10	700	500	850pps	
GM12-15BY-100	5	2	18°	1/100	10	1000	500	850pps	