

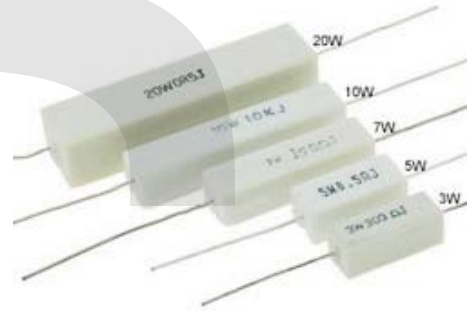
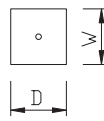
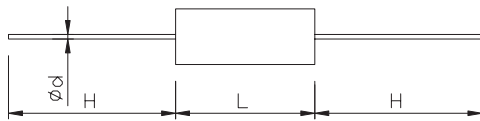
Cement Fixed Resistors Series

KLS6-SQP Cement Fixed Resistors Series

Features

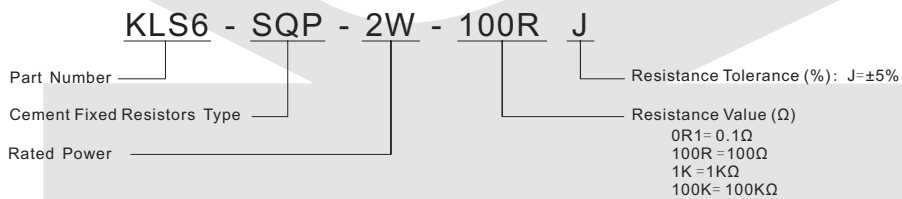
1. Good heat-durability, Low temperature coefficient, low noise, high load power, high insulating capacity, nonflammability.
2. Operating ambient temperature: -55°C ~ +275°C

Dimension (unit: mm)



Type	Dimension (mm)					Resistance Range	
	W±1	D±1	L±1	d±0.05	H±5	Wire-wound	Metal Oxide Film
Normal Size							
SQP-2W	6.4	6.4	18	0.7	28	0.1 Ω -27 Ω	20 Ω -40K Ω
SQP-3W	8	8	22	0.7	28	0.1 Ω -39 Ω	30 Ω -62K Ω
SQP-5W	9.5	9.5	22	0.8	28	0.1 Ω -47 Ω	40 Ω -120K Ω
SQP-7W	9.5	9.5	35	0.8	35	0.1 Ω -680 Ω	510 Ω -250K Ω
SQP-10W	9.5	9.5	48.5	0.8	35	0.1 Ω -910 Ω	820 Ω -250K Ω
SQP-15W	12.5	12.5	48.5	0.8	35	1 Ω -1K Ω	
SQP-20W	14.5	12.5	60	0.8	35	2 Ω -1.2K Ω	
SQP-25W	14.5	12.5	64	0.8	35	2 Ω -1.5K Ω	
Small Size							
SQPS-3W	6	6	20	0.6	28	0.1 Ω -27 Ω	20 Ω -40K Ω
SQPS-5W	6	6	25	0.7	35	0.1 Ω -100 Ω	100 Ω -100K Ω
SQPS-7W	9	9	25	0.8	35	0.1 Ω -100 Ω	100 Ω -100K Ω

ORDER INFORMATION



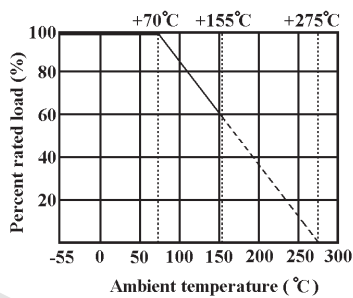
Cement Fixed Resistors Series

KLS6-SQP Cement Fixed Resistors Series

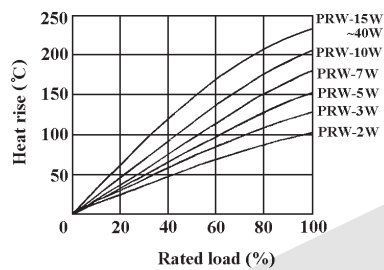


Item	Performance requirement	Test methods
Temperature Coefficient	Wire coiling: $-300\text{ppm}/^{\circ}\text{C} \leq a \leq +300\text{ppm}/^{\circ}\text{C}$	JIS5202-5.2 -55°C to +155°C
	Oxide rod: $-350\text{ppm}/^{\circ}\text{C} \leq a \leq +350\text{ppm}/^{\circ}\text{C}$	T. C. R = $(R_2 - R_1) \times 10^6 / R_1 \times (T_2 - T_1)$ (PPM/°C)
		R1: Resistance value at room temperature (T1);
		R2: Resistance value at room temperature + 100°C (T2)
Short time overload	$\Delta R \leq \pm (2\% R_0 + 0.1 \Omega)$	JIS5202-5.5 2.5 times RCWV for 5 seconds
Resistance to soldering heat	$\Delta R \leq \pm (1\% R_0 + 0.05 \Omega)$	JIS5202-6.4 350°C ± 10°C for 3 ± 0.5 seconds
Solderability	The area of soldering is over 95%	JIS5202-6.5 235°C for 5 ± 0.5 seconds
Temperature cycling	$\Delta R \leq \pm (5\% R_0 + 0.1 \Omega)$	JIS5202-7.4 → 65°C → room temp. → 150°C → room temp. for 5 cycles
Load life in moisture	$\Delta R \leq \pm (5\% R_0 + 0.1 \Omega)$	JIS5202-7.9 40 ± 2°C, 90 ~ 95% RH at RCWV for 1000 hrs. (1.5 hrs. on, 0.5 hrs. off)
Nonflammability	No visible flame	SJ3272-4.2

Derating Curve



Heat Rise Chart



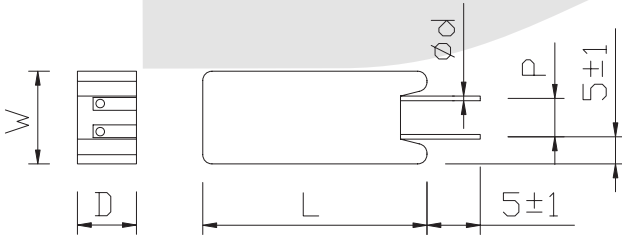
Cement Fixed Resistors Series

KLS6-SQM Cement Fixed Resistors Series

Features

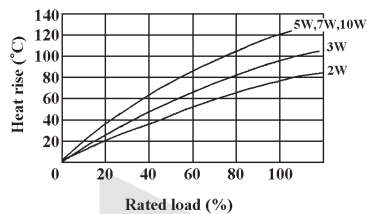
1. Good heat-durability, Low temperature coefficient, low noise, high load power, high insulating capacity, nonflammability.
2. Operating ambient temperature: -55°C ~ +275°C

Dimension (unit: mm)



Type	Dimension (mm)					Resistance Range	
	W±1	D±1	L±1	d±0.05	P±1	Wire-wound	Metal Oxide Film
Normal Size							
SQM-2W	11.5	7.5	20	0.7	5	0.1 Ω - 27 Ω	20 Ω - 40K Ω
SQM-3W	12.5	8.5	25	0.7	5	0.1 Ω - 39 Ω	30 Ω - 62K Ω
SQM-5W	12.5	9	25	0.8	5	0.1 Ω - 47 Ω	40 Ω - 120K Ω
SQM-7W	12.5	9	38	0.8	5	0.1 Ω - 680 Ω	510 Ω - 250K Ω
SQM-10W	12.5	9	50	0.8	5	0.1 Ω - 910 Ω	820 Ω - 250K Ω
Small Size							
SQMA-5W	12.5	9	25	0.8	7.5	0.1 Ω - 47 Ω	40 Ω - 120K Ω
SQMA-7W	12.5	9	38	0.8	7.5	0.1 Ω - 680 Ω	510 Ω - 250K Ω
SQMA-10W	16	12	35	0.8	7.5	0.1 Ω - 910 Ω	820 Ω - 250K Ω

Heat Rise Chart



ORDER INFORMATION

KLS6 - SQM - 2W - 100R J

Part Number

Cement Fixed Resistors Type

Rated Power

Resistance Tolerance (%): J=±5%

Resistance Value (Ω)

0R1= 0.1Ω
100R = 100Ω
1K = 1KΩ
100K = 100KΩ

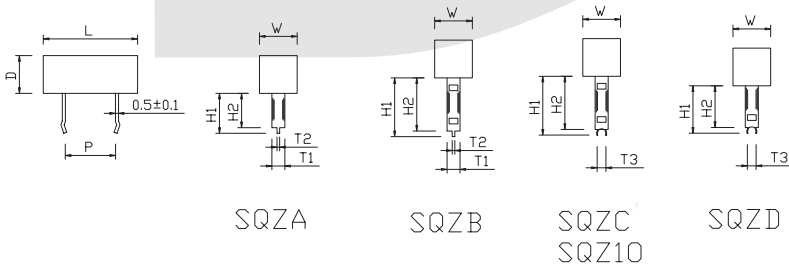
Cement Fixed Resistors Series

KLS6-SQZ Cement Fixed Resistors Series

Features

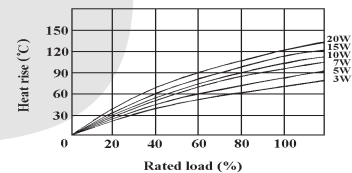
1. Good heat-durability, Low temperature coefficient, low noise, high load power, high insulating capacity, nonflammability.
2. Operating ambient temperature: -55°C ~ +275°C

Dimension (unit: mm)



Type	Dimension (mm)									Resistance Range	
	W±1	D±1	L	P±1.5	T1±1	T2±0.2	T3±0.5	H1±2	H2±2	Wire-wound	Metal Oxide Film
SQZA-3W	10	9	22±1	9.5	7	1.6	-	24	10	0.1Ω-47Ω	48Ω-40KΩ
SQZB-3W						1.6	-	39	25		
SQZC-3W						1.5	3.5	36	22		
SQZD-3W						1.3	3.5	24	10		
SQZA-5W	10	9	27/25	15/8.5	7	1.6	-	24	10	0.1Ω-120Ω	121Ω-62KΩ
SQZB-5W			1.6	-		39	25				
SQZC-5W			27±1	15		1.5	3.5	36	22		
SQZ10-5W			1.3	3.5		39	24				
SQZD-5W			1.3	3.5		24	10				
SQZA-7W	10	9	35±1	22	7	1.6	-	24	10	0.1Ω-560Ω	561Ω-120KΩ
SQZB-7W						1.6	-	39	25		
SQZC-7W						1.5	3.5	36	22		
SQZ10-7W						1.3	3.5	39	24		
SQZD-7W						1.3	3.5	24	10		
SQZA-10W	10	9	48±1.5	35/32	7	1.6	-	24	10	0.1Ω-820Ω	820Ω-120KΩ
SQZB-10W						1.6	-	39	25		
SQZC-10W						1.5	3.5	36	22		
SQZD-10W						1.3	3.5	24	10		
SQZA-15W	12.5	11.5	48±1.5	32	10	3	-	35	15	1Ω-1KΩ	-
SQZB-15W						3	-	47	30		
SQZC-15W						2	5	47	30		
SQZA-20W	12.5	13.5	63±1.5	45	10	3	-	35	15	1Ω-1.5KΩ	-
SQZB-20W						3	-	47	30		
SQZC-20W						2	5	47	30		

Heat Rise Chart



ORDER INFORMATION

KLS6 - SQZA - 3W - 100R J

Part Number

Cement Fixed Resistors Type

Rated Power

Resistance Tolerance (%): J=±5%

Resistance Value (Ω)

0R1= 0.1Ω
100R = 100Ω
1K = 1KΩ
100K = 100KΩ

