

KLS ELECTRONIC CO., LTD.

# 承认书

APPROVAL SHEET

☆ 产品型号/Mode number: L-KLS4-WH148-K2-2-18T-BXXX-L15

☆ 客户型号/CustomerP/N:

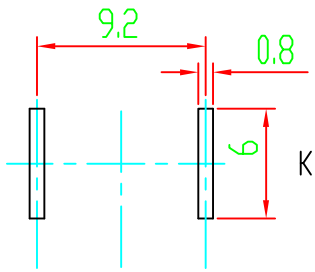
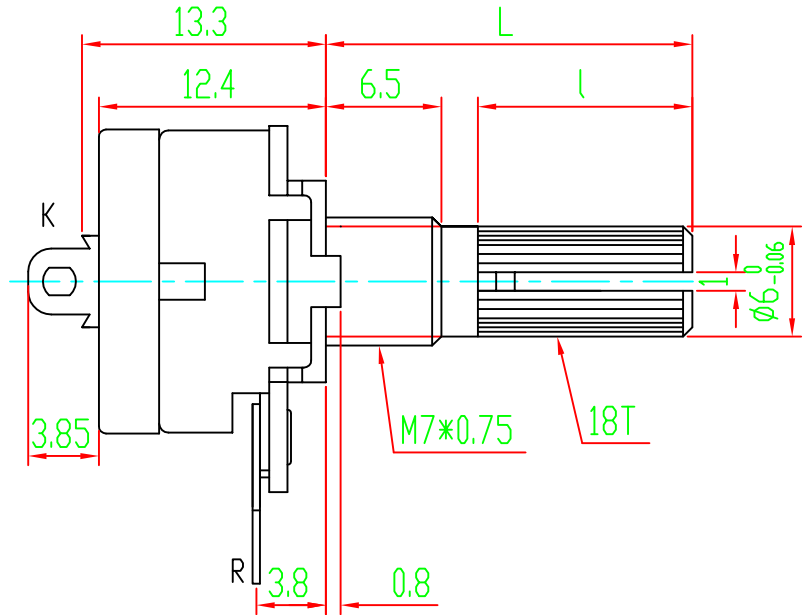
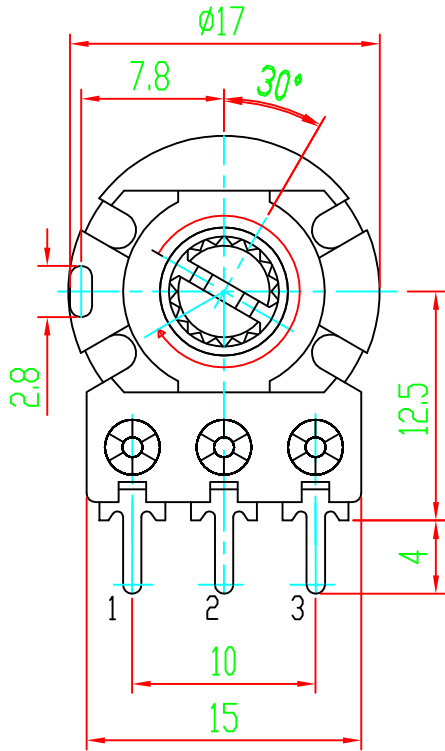
☆ 公司名称/Customer: \_\_\_\_\_

☆ 日期: 2018-01-22

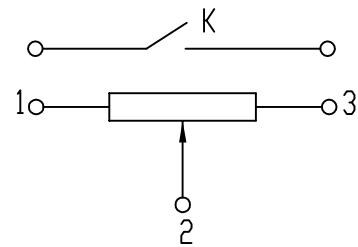
出图/Issued By:

客户名称			
型号规格	L-KLS4-WH148-K2-2-18T-BXXX-L15		
客户料号			
<b>1 电器特性</b>			
<b>项 目</b>		<b>规 格</b>	
<b>1.1 Total Resistance</b>			
<b>1.2 Total Resistance Tolerance</b>		<b>500 Ω &lt;R&lt;1M Ω : ±20 %; R&lt;500 Ω or R&gt;1M Ω : ±30 %</b>	
<b>1.3 Resistance Taper</b>		<b>A, B,C</b>	
<b>1.4 Rotational Noise</b>		<b>Less than 100mV</b>	
<b>1.5 Insulation Resistance</b>		<b>More than 100M Ω at DC 500V</b>	
<b>1.6 Withstand Voltage</b>		<b>1 minute at AC 500V</b>	
<b>1.7 Max.Operating Voltage</b>		<b>Linear Taper B:AC 200V,Other Tapers:AC 150V</b>	
<b>1.8 Number of click</b>		<b>21</b>	
<b>1.9 Residual Resistance</b>		<b>Term.1~2:less than 20 Ω ; Term.2~3:less than 20 Ω</b>	
<b>1.10 Rated Power</b>		<b>Linear Taper B:0.2W,Other Tapers:0.1W</b>	
<b>2 Mechanical characteristics</b>			
<b>2.1 外形尺寸</b>		<b>附图</b>	
<b>2.2 Total Rotational Angle</b>		<b>300° ±5°</b>	
<b>2.3 Rotational Torque</b>		<b>20~100gf.cm</b>	
<b>2.4 Rotational Stopper Strength</b>		<b>7kgf.cm Min</b>	
<b>2.5 Push-Pull Strength</b>		<b>8Kgf Min</b>	
<b>2.6 Click Torque</b>		<b>100~300gf.cm</b>	
<b>2.7 Bushing&amp;Nut Tight Strength</b>		<b>8Kgf.cm Min</b>	
<b>2.8 Switch Circuit</b>		<b>/</b>	
<b>2.9 Switch Contact Resistance</b>		<b>/</b>	
<b>2.10 Switch Rotational Angle</b>		<b>/</b>	
<b>2.11 Rotary life</b>		<b>10,000 cycles</b>	
<b>ChangZhou YuHao Electronic Co.,Ltd.</b>			
		<b>Fiction</b>	<b>Review</b>
		<b>毛志平</b>	<b>钱婷鸥</b>
			<b>Approval</b>
			<b>宋继鹏</b>
<b>Number</b>			

Shaft Shown in Full  
C.C.W. Position



P.C.B MOUNTING DETAIL



CIRCUIT DIAGRAM

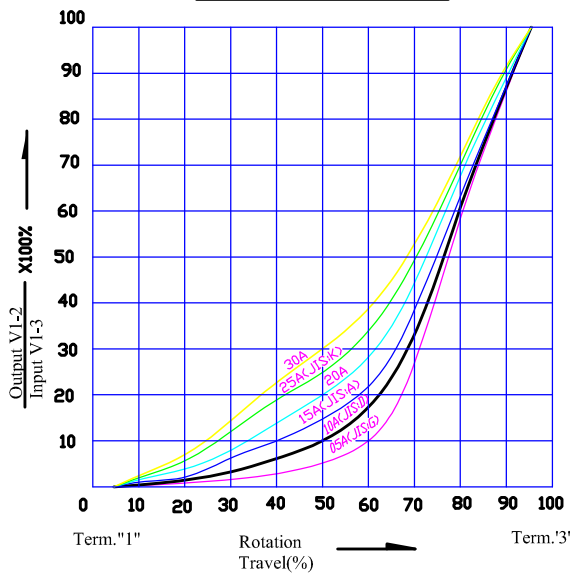
L	15 ✓	20	25	30
l	7 ✓	12	12	12

02				05				
01				04				
	DATE	REVISION	APPROVED	03				
毛志平 2018.1.22	钱庭鸥 2018.1.22	宋继鹏 2018.1.22	MODEL: L-KLS4-WH148-K2-2-18T-BXXX-L15				DRAWING NO:	
			<b>KLS ELECTRONIC CO., LTD.</b>					
DRAW	CHKD	APPD						

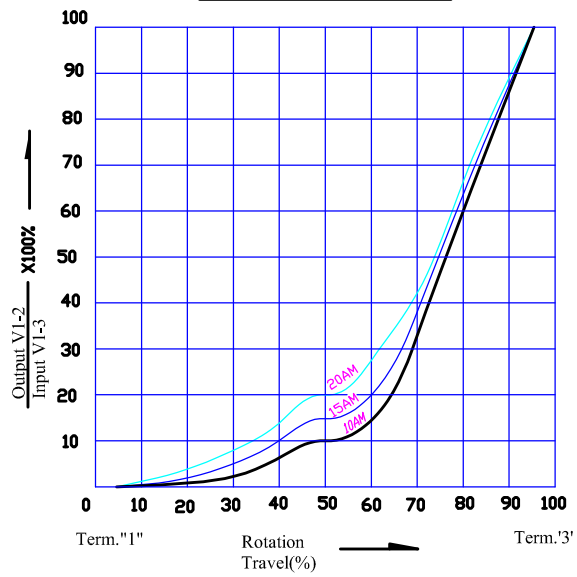
# Resistance taper 電阻規律曲線類型

Pattern of resistance curve

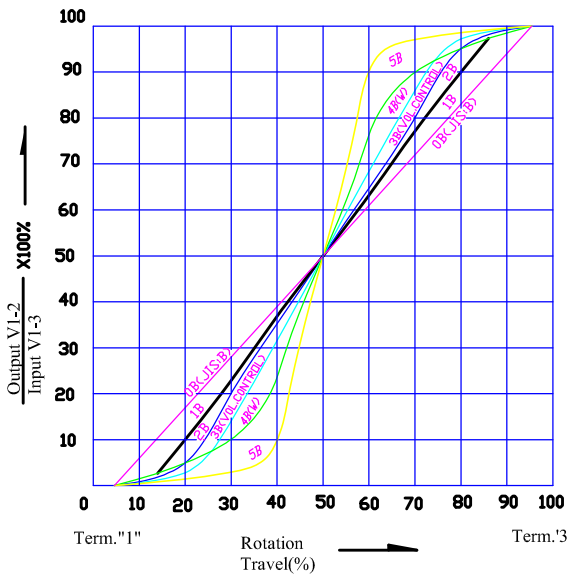
TAPERS (A) SERIES



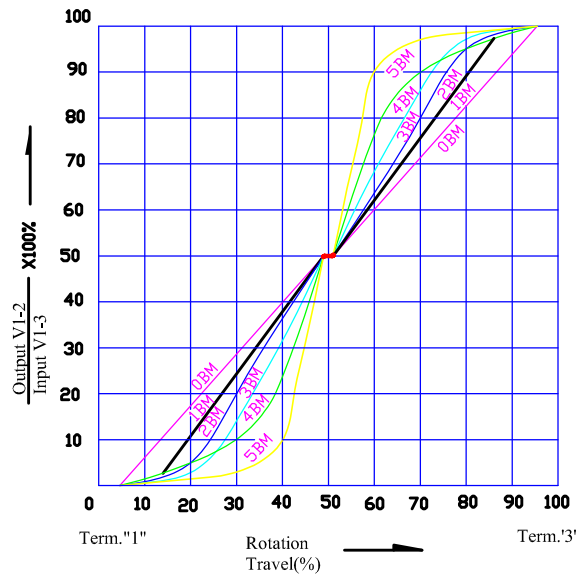
TAPERS (A) WITH 50% TAP



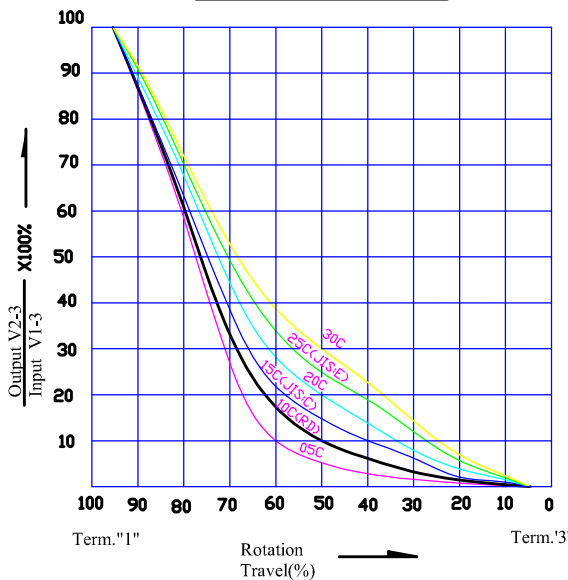
TAPERS (B) SERIES



TAPERS (B) WITH 50% TAP



TAPERS (C) SERIES



TAPERS (M) & (N)

